



***Bucks County Community
College***

2020

**ANNUAL
SECURITY
REPORT**

For Calendar Years
2017, 2018, 2019

**275 Swamp Rd.
Newtown, PA 18940**

*Published on November 30, 2020 by the
Office of Security and Safety*

BUCKS COUNTY COMMUNITY COLLEGE 2019 ANNUAL SECURITY REPORT

INTRODUCTION:

As of September 2020, Bucks County Community College's three campuses provide affordable higher education opportunities for 6,738 students. Approximately 39% of the college's registered students attend on a full-time basis. Additionally, there are about 450 full-time employees of the college. The main campus, located in Newtown, PA, extends over 260 acres, including more than two dozen buildings. The college also operates the Gene and Marlene Epstein Campus at Lower Bucks, located in Bristol, PA, and the Upper Bucks Campus, located in Perkasi, PA. This document is intended to provide information on campus safety programs and policies and procedures regarding the reporting of emergencies and campus crime rates.

It is the primary objective of the Office of Security and Safety to provide a safe campus environment where community members can study, work, and develop personally, professionally, intellectually, and socially. Questions, comments, or suggestions regarding the information contained within this document or any related issue should be forwarded to the Executive Director of Security and Safety at (215) 968-8394.

Given the number of students and employees who make up the College community, security and safety services are a vital concern. The Office of Security and Safety has primary responsibility for emergency response and security on campus. Security & Safety has its headquarters at the main campus, 275 Swamp Rd., Cottage 4, Newtown, PA 18940 (215-968-8911). The office is under the leadership of the Executive Director, who reports to the Vice-President for Administrative Affairs. The Assistant Director provides coordination of physical security systems, fire safety, emergency management activities, and parking and oversees the department in the Executive Director's absence. Two lieutenants supervise uniformed patrol operations. The Executive Director and lieutenants are certified under PA Act 235 and armed while on duty.



In addition to supervisory personnel, the Office is staffed 24 hours a day by 14 full-time and 9 part-time security officers who proactively patrol the campus, supplement the office's communications center operations and provide security services for campus special events. Office operations are additionally supported by four administrative assistants as well as part-time student employees. Security and Safety officers also patrol the Lower Bucks and Upper Bucks Campuses when they are open. Overnight shifts and some weekend shifts at the Lower Bucks Campus are staffed via contractual arrangement with a private security firm.

Officers patrol the campus by foot, vehicle, and bicycle. The bicycle patrol program provides an effective means for security officers to monitor locations not open to vehicle traffic, such as walkways and student gathering areas.

In order to help ensure the highest degree of security and safety, campus community members are encouraged to think of campus safety as a shared responsibility. This may include considerations such as taking advantage of the free security escort service, properly securing personal belongings, and reporting crimes and suspicious activities. The Office of Security and Safety takes a leadership role in this area through preventive patrols, incident investigation, fire prevention, educational programs on campus safety, and crime prevention services. In addition, the Office of Security and Safety is responsible for fire alarm, access control and video surveillance systems, parking and traffic regulation, securing lost property, and investigation of reported crimes on campus.

In order to respond to medical emergencies, Security and Safety officers are certified in CPR (Cardio-Pulmonary Resuscitation), AED (Automated External Defibrillator) and as Emergency Responders. Several officers are also certified as Emergency Medical Technicians (EMT). All officers and supervisors are trained in the use of Narcan, a medication effective in reversing the effects of opioid overdoses.

CRIME REPORTING AND TIMELY WARNINGS:



The college takes its duty to inform students of potentially threatening situations very seriously. As a result, information related to crime and criminal activity is provided to the community in an accurate and timely fashion. Because community awareness is essential to effective crime reduction, the college will release information which can be used by students and other College community members to reduce their chances of becoming crime victims. The Office of Security and Safety issues timely warnings or safety alerts to campus community members informing them of incidents/crimes impacting the campus community and/or surrounding property. This information is disseminated to the campus community via several channels, including email, text messages, website postings, social media, on-campus computer screens, informational flyers, and during crime prevention presentations. The decision to issue a timely warning or safety alert is made by the Executive Director of Security and Safety in consultation with the President and/or Vice President for Administrative Affairs. Safety alert notices are submitted to the campus community regarding crimes that represent a continuing threat to students and employees and which were reported to officials with significant responsibility for student and campus activities, campus safety and security, or the local police. Names of victims are always withheld from timely warning messages.

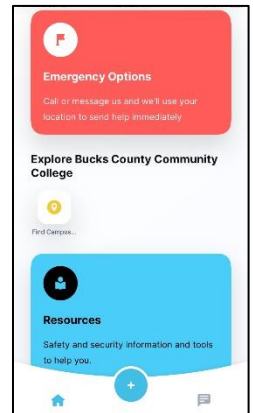
REPORTING OF CRIMINAL ACTIONS AND EMERGENCIES:

To report a crime or emergency, members of the community should call the Office of Security and Safety by dialing 215-968-8911 or via extension 8911 from phones located on campus. For quick retrieval in an emergency, students and employees are encouraged to add this number to contacts on their mobile device. Reports may also be made in person by visiting Cottage 4 or approaching any security officer. Crimes may be reported anonymously at <http://www.bucks.edu/tips>. In addition, crimes or suspicious occurrences may be reported directly to Security & Safety via the LiveSafe app which is available as a free download for iOS and Android devices.

To obtain information or request an escort or any other security service, students should call 215-968-8911 or extension 8911 from campus phones. All phone lines routed to Security and Safety are answered 24 hours-a-day by trained Security personnel. If needed, Security and Safety personnel will notify Bucks County emergency dispatchers regarding emergency situations occurring on-campus via the County's 911 system. A direct radio link with the Bucks County Communications Center affords the Office of Security & Safety the ability to communicate directly with responding police, fire, and EMS personnel in an emergency.

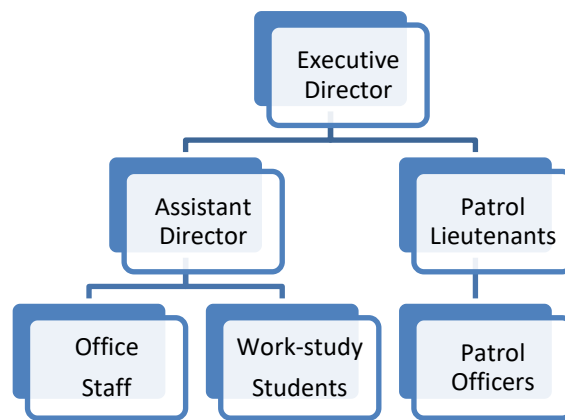
The Office of Security & Safety works closely with the Office of Student Life and the Physical Plant department to ensure a safe environment for higher education. The Newtown Township Police Department, Bristol Township Police Department, Pennridge Regional Police Department, Tyler State Park Rangers, as well as local fire departments and ambulance corps are also available to support the mission of the Office of Security and Safety.

Located throughout the Newtown campus are 17 well-marked, blue light emergency call boxes. An additional two call boxes are installed at the Lower Bucks Campus along with four at the Upper Bucks Campus. In addition to reporting emergencies and suspicious activity, the call boxes may be used to request an escort, evening shuttle pickup or parking lot assistance. Security personnel inspect the call boxes on a regular basis to ensure that they are operative. In addition, surveillance video cameras deployed at all three campuses assist in maintaining a safe environment.



Students are encouraged to download the free LiveSafe app for iOS or Android devices.

DEPARTMENT OF SAFETY AND SECURITY ORGANIZATIONAL STRUCTURE:



CAMPUS ENFORCEMENT AUTHORITY:

Students and employees are encouraged to promptly report all on-campus crime and suspicious activities to the Office of Security & Safety. When incidents occur off-campus, students and employees are encouraged to contact the appropriate local police department. It should be noted that Security & Safety officers have no arrest authority beyond that of an ordinary citizen; however, officers stand ready to receive reports of crime and refer these to the local police or campus judicial officials. Security personnel also perform follow-up investigations when appropriate. The Office maintains excellent working relationships with the Newtown Township Police Department, Bristol Township Police Department, Pennridge Regional Police Department, and the Tyler State Park Rangers. To that end, the college has written memoranda of understanding (MOU) with the three police agencies which have primary jurisdiction over our campuses. The College and the Office of Security & Safety diligently cooperate with law enforcement agencies to maximize the effectiveness of local police services to the campus community. The Associate Provost and the Director of Student Life coordinate disciplinary actions for matters that violate the College Code of Conduct.



CAMPUS COMMUNITY SUGGESTIONS & FEEDBACK:

The Executive Director of Security & Safety strongly encourages students, faculty and employees to make suggestions or inquiries on matters related to campus safety. In addition, concerns about the conduct or job performance of Security & Safety personnel should be brought to the attention of the Executive Director by calling (215) 968-8394 or by email to: Dennis.McCauley@Bucks.edu.

ALCOHOL POLICY:

The college actively discourages and sanctions the irresponsible use of alcohol. In compliance with Pennsylvania laws and the Drug Free Schools and Communities Act, the college does not condone the consumption of alcoholic beverages by students or their guests on campus. The college will establish reasonable procedures to assure that students are aware of their legal obligations in this regard. Inappropriate behavior involving the furnishing or consumption of alcoholic beverages will result in appropriate disciplinary proceedings and penalties. The college recognizes and cooperates with law enforcement authorities in their enforcement efforts pertaining to the illegal consumption or possession of alcoholic beverages, and will seek to educate students about laws pertaining to the use, consumption, possession, and abuse of alcoholic beverages.

CONTROLLED SUBSTANCE POLICY:

Illegal possession, manufacture, distribution, or use of drugs or narcotics by students constitutes unacceptable conduct. Students involved in such activities are subject to disciplinary measures by the college. Moreover, under Pennsylvania law, those who possess a small amount of marijuana (30 grams or less) are guilty of a misdemeanor. Selling marijuana and illegally possessing or distributing any other type of drug is a felony and carries heavier penalties (see Appendix for additional information on penalties). The Office of Security and Safety will report drug law violations to local police.

It is the policy of Bucks County Community College to maintain a drug-free workplace. Illegal possession, use, manufacture, or distribution of drugs or narcotics by employees constitutes unacceptable conduct and makes such employees subject to disciplinary procedures of the college, up to and including termination.

The purpose of this summary is to provide students and employees of the college with general information on applicable laws. Although every effort has been made to provide accurate information at the time of printing, this information can at any time be superseded by changes in the law. Each student and employee has the ultimate responsibility to stay informed concerning changes in the law. Those with specific legal questions are encouraged to consult with an attorney.

All Security & Safety personnel have access to and are trained in the use of Narcan, a medication which can reverse the effects of an opioid overdose.

The College's Drug and Alcohol Prevention Program which includes information on criminal law penalties for drug violations may be viewed at:

<https://www.bucks.edu/media/bcccmcdialibrary/pdf/DrugAlcoholInfoSheets.pdf>.

ALCOHOL AND DRUG ABUSE EDUCATION PROGRAMS:

Alcohol/Drug Related Support Services - Bucks County Community College's Counseling Services has a staff of counselors who are available to students in crisis as well as for ongoing counseling, assessment, and referral. All counseling services are strictly confidential. Students may refer themselves or be referred by the Office of Student Life following alcohol or drug-related incidents. They may also be referred by concerned faculty or administrators. Counseling staff assists the student by recommending off-campus assessment/treatment providers from which the student may choose.

SEXUAL ASSAULT PREVENTION PROGRAMMING:

A variety of programs offered by the Counseling Center, the Office of Security and Safety, and the Student Life Office deal with various aspects of sexual assault. For example, the Office of Security & Safety has two staff members certified as instructors of the Rape Aggression Defense (R.A.D.) system. The Office of Security & Safety, in partnership with the Student Government Association, offers this valuable training, free of charge, to the women of the campus community.



Security Officers ensure that safety features such as locks, alarms and lighting are in proper working order.

SEXUAL ASSAULT, DOMESTIC OR DATING VIOLENCE, STALKING & GENDER-BASED PROHIBITED CONDUCT:

Bucks County Community College will act swiftly to protect the rights of all its members. Women or men who have been victims of sexual assault, domestic violence, dating violence, or stalking are protected by the policy commitment of Bucks County Community College to comply with applicable federal and state law prohibiting sex or gender discrimination, unlawful retaliation, and sexual harassment. Furthermore, it is the policy of the college to prohibit conduct that constitutes sexually related crimes. The college expressly prohibits gender-based prohibited conduct as defined in this policy, which applies to all students, employees, faculty members, administrators, and trustees of the college, as well as contractors and vendors who may be performing work on behalf of the college.

The college will take immediate and appropriate action once it learns of any act of gender-based prohibited conduct in any of its educational programs or activities. The college will act on any complaint of gender-based prohibited conduct in order to investigate and to resolve such complaints promptly and effectively. While the college does not limit the time frame for filing a complaint, it encourages complaints to be filed in as timely a manner as possible since the college's ability to investigate may be limited in cases in which a significant length of time has elapsed between an incident and the filing of a complaint. When reviewing a complaint, the standard of review utilized by the college shall be that of a preponderance of the evidence (i.e., whether the conduct complained of is more likely than not to have occurred).

During an investigation, the parties may be permitted to present witnesses and other evidence. The college's investigation will continue whether or not the complaint also is being investigated by another agency or by law enforcement unless the college's investigation would impede a law enforcement investigation. If the investigation is suspended during an investigation by law enforcement, the college will implement interim steps to protect the victim's safety.

In cases involving allegations of sexual harassment or sexual violence between students, a judicial hearing consistent with the Student Code of Conduct will be conducted following the conclusion of any investigation into the matter. If it is determined that a violation of College policy has occurred, the college will act promptly to eliminate the inappropriate conduct and prevent its recurrence and address its effects by taking appropriate action, which may, depending upon the circumstances, include but not be limited to, a change in class or work schedules or assignments, mandatory training or suspension, imposing restrictions on contact between parties, providing safe on-campus transportation and/or a security escort to and from classes, to a car or public transportation; leaves of absence, increased security or monitoring of certain areas of the campus. Disciplinary measures may include reprimand, loss of privilege, expulsion and/or immediate termination of employment.

Upon completion of the investigation, the individual(s) who made the complaint and the individual(s) against whom the complaint was made will be simultaneously advised of the results of the investigation in writing and, where a remedy is determined to be appropriate, to inform the parties of the steps that will be taken to remedy the situation.

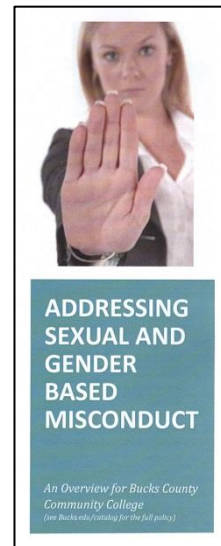
Following a report of sexual assault, sexual harassment, or other sexual misconduct, the college will provide interim support and reasonable protection against further acts of misconduct, harassment, or retaliation as needed, as well as provide services and resources to provide a safe educational and employment environment. The college will determine the necessity and scope of any interim measures pending the completion of the complaint process.

Depending on the facts and circumstances of the specific complaint, the College's Title IX Coordinator or designee will immediately contact agencies and organizations to effect immediate relief, care, and support for the complainant and/or the victim in any given case including but not limited to:

1. The closest, competent health care facility
2. The police department and the Office of Security and Safety
3. The Student Support Referral Team (SSRT) or
4. The Employee Assistance Program (EAP)

As an immediate priority, care will be taken to ensure the safety and well-being of the complainant and/or victim, and to exercise all precautionary measures to prevent a repeat of the alleged incident of gender-based prohibited conduct. Accordingly, interim measures, such as a temporary suspension or leave of absence, may be implemented pending a hearing on the matter.

In cases of sexual violence, domestic violence, dating violence or stalking, regardless of where the incident occurred, the Title IX Coordinator or designee will inform the complaining victim of the right to file a criminal complaint with applicable law enforcement authorities and shall make known and available to the complaining victim information related to available support services and medical and counselling resources as applicable. A complainant who wishes to pursue a criminal complaint is encouraged to make a report to local law enforcement. The Office of Security and Safety will help facilitate this contact, if requested to do so by the complainant. Local





law enforcement will determine if a criminal investigation will occur and if the case should be referred for prosecution. Unless there are compelling circumstances, the college will typically not file an independent police report without the consent of the complainant.

Retaliation against any individual for making a complaint of a violation or alleged violation of this policy will not be tolerated. Any acts of retaliation will be subject to appropriate disciplinary action, such as but not limited to reprimand, change in work assignment, loss of privilege, mandatory training or suspension/expulsion and/or immediate termination.

The College's Chief Diversity, Equity and Inclusion Officer, Kevin Antoine, J.D., serves as Title IX Coordinator and may be reached at (215) 968-8093 or by email at: kevin.antoine@bucks.edu.

SEX OFFENDER REGISTRY AND ACCESS TO RELATED INFORMATION:

The federal Campus Sex Crimes Prevention Act, enacted on October 28, 2000, became effective on October 28, 2002. The law requires institutions of higher education to issue a statement advising the campus community where law enforcement agency information provided by a State concerning registered sex offenders may be obtained. It also requires sex offenders already required to register in a state to provide notice, as required under state law, of each institution of higher education in that state at which the person is employed, carries on a vocation, or is a student.

In the Commonwealth of Pennsylvania, information regarding registered sex offenders who are subject to community notification may be obtained from a community member's respective local municipal police agency and/or the Pennsylvania State Police. In Newtown, Bristol and Perkasie, where our three campuses are located, information regarding registered sex offenders who are subject to community notification may be obtained at the respective local police departments, at any Pennsylvania State Police barracks, or online at www.pameganslaw.state.pa.us.

ACCESS TO CAMPUS FACILITIES:

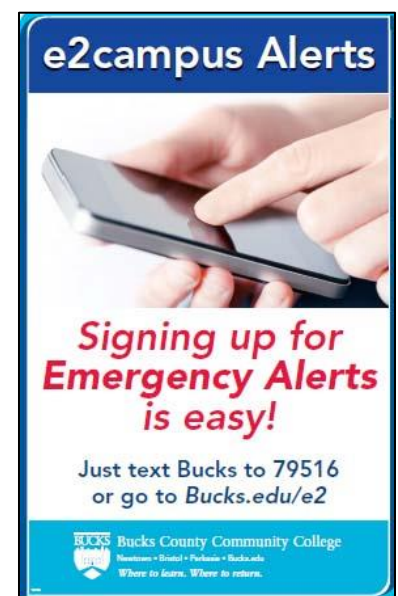
In the normal course of operations, most campus buildings and facilities are accessible to members of the campus community, guests and visitors during normal hours of business. Faculty and staff who require access during non-duty hours are asked to notify or visit Security and Safety. Department heads are requested to submit entry authority lists to Security and Safety for personnel assigned to their respective departments with special access needs. Note that, due to the COVID-19 pandemic, the normal access process has been modified to include a health screening and limited to only those who have classes, employment or other business on campus.

MAINTENANCE AND SECURITY OF CAMPUS FACILITIES:

Bucks County Community College maintains a strong commitment to campus safety and security, including facility issues which may impact the safety of the campus community. Exterior lighting, for example, is an important environmental component of an effective crime prevention program. Inspections and surveys of exterior and interior campus lighting are conducted on a daily basis. While on duty, security officers routinely identify lighting problems via reports, which are forwarded to Physical Plant for repair. Lighting problems of a significant nature are reported immediately to a maintenance staff member.

As a part of routine patrols security officers inspect exterior doors on campus facilities to ensure that their closing and locking units are working properly. Exterior doors on all academic and administrative buildings on campus are locked and secured each evening by campus security officers. The officers also report door and security hardware deficiencies when discovered.

Parking lots and other public areas are actively patrolled by campus security. These patrols are conducted to increase visibility and act as a deterrent to would-be vandals or thieves. Security representatives conduct both scheduled facility safety audits as well as daily inspections of facilities while on patrol. These audits and inspections include all College-owned buildings, facilities, storage areas, and other areas owned or controlled by the college. Any observed discrepancies are reported to the appropriate campus departments for follow-up and correction.



SECURITY AWARENESS AND CRIME PREVENTION PROGRAMS:



The Office of Security and Safety strives to prevent crimes from occurring instead of merely reacting to reports of crimes that have already occurred. The Office's crime prevention program is designed to minimize criminal opportunities that exist on campus and to create an atmosphere in which students and other community members become more aware of their own security and the security of others. Crime prevention programs offered by the Office of Security & Safety include an escort service, personal safety programs, printed crime prevention materials, R.A.D. training, education and prevention programs, security & facility surveys, safety training and awareness programs and social media messaging.

In addition, the Executive Director and Assistant Director conduct liaison meetings with representatives of the Student Government Association. The Office of Security & Safety also enhances campus safety through its participation in professional organizations such as the International Association of Campus Law Enforcement Administrators, Northeast Colleges and

Universities Security Association, Police Chief's Association of Bucks County, Philadelphia Electronic Crimes Task Force, and National Safety Council. The Office of Security and Safety's approach to crime prevention mirrors many of the best practices associated with the community policing concept in an effort to provide campus community members with a truly professional level of public safety services.

MISSING/RUNAWAY PERSON(S):

If a member of the college community has reason to believe that a student or visitor is missing, all possible efforts are made to locate the individual to determine his or her state of health and well-being through the collaboration of the Office of Security and Safety and the Office of Student Life. Based upon circumstances, the Office of Security and Safety may also enlist the aid of the local police agency having jurisdiction. Concurrently, college officials will endeavor to determine the student's whereabouts through contact with friends, associates, and/or employers of the student. Whether or not the student has been attending classes, activities or academic meetings, or appearing for scheduled work shifts will be established.

If located, verification of the student's state of health and intention of returning to the campus is made. When appropriate, a referral will be made to the Counseling Services Office and/or Student Life Office.

If not located, notification of the family within 24 hours of receiving the initial report is made to determine if they know of the whereabouts of the student. Such notification will be made by a Student Life staff member or an officer from the Office of Security and Safety. In addition, appropriate family members or associates are encouraged to make an official missing person report to the law enforcement agency with jurisdiction. The Office of Security and Safety will cooperate with and assist the primary investigative agency in its efforts to locate the missing individual. The Office of Security and Safety will open an official investigation and retain status as the primary investigative unit until relieved by the law enforcement agency with jurisdiction.

All pertinent law enforcement agencies, including those located along suspected travel corridors or place of original domicile, will be notified and requested to render assistance in the effort to locate the missing individual.

Gathering of information regarding the missing person will include, but may not be limited to: name, gender, race, date of birth, height, weight, eye color, hair color/length, date/time of last contact, photo availability, possible medicinal usage, address, phone number, S.S. #, full information of vehicle the individual may be operating, names/address/phone number(s)/description(s) of person(s) missing individual may be with. The following criteria may trigger immediate notification to the local police Department:

1. The person reported missing has a physical or mental disability; thereby subjecting him/herself, or others to personal and/or immediate danger.
2. The person reported missing is/was in the company of another person under circumstances indicating his/her physical safety is in danger.
3. The person reported missing is missing under circumstances indicating the disappearance was not voluntary.
4. The person is less than 18 years of age.

"Suzanne's Law" requiring local police to notify the National Crime Information Center (NCIC) when someone between 18 and 21 is reported missing was signed into law by President George W. Bush in the Spring of 2003 as part of the national "Amber Alert" Bill. The federal law is named after Suzanne Lyall, a State University of New York at Albany student who has been missing since 1998. Previously police were only required to report missing persons under the age of 18. This new law is intended to encourage police to begin investigating immediately when college-age people disappear, instead of waiting 24 hours, which has been a common practice. Upon closure of the missing person investigation, all parties previously contacted will be advised of the status of the case.



*Bucks County Community College
hosted the Philadelphia Area
Electronic Crimes Task Force in
April, 2019*

EMERGENCY RESPONSE AND EVACUATION PROCEDURES:

In the event of a significant emergency or dangerous situation involving an immediate threat to the health or safety of those on campus, communications will be under the direction of the College President or designated Emergency Director. The college employs a variety of means for rapid notification of the campus community during an emergency, including text message alerts, email alerts, social media alerts, desktop computer alerts, and announcement banners on the college's home page.

In such an emergency, the college will, without delay, and taking into account the safety of the community, determine the content of the notification system, unless the notification will, in the judgment of responsible authorities, compromise efforts to assist victims or to contain, respond to, or otherwise mitigate the emergency.

When confirmation of an emergency has been made by the Office of Security and Safety or by a public safety agency, the President or President's designee will declare a campus-wide emergency. The appropriate emergency notification system(s) will be determined and the notification system(s) will be activated.

The following college employees are responsible for carrying out the emergency notification process: President, Vice-President for Administrative Affairs, Provost, Associate Provost, Dean of Learning Resources, Vice-President for Information Technology and Innovation, Executive Director of Security & Safety, Assistant Director of Security & Safety, and Director of I.T. Security.

External communications during an emergency will be under the direction of the President or the designated Emergency Director. One official spokesperson will be designated, along with an alternate. All public and media contacts will be handled by the Public Relations Office.

The Office of Security & Safety coordinates tests of the college's emergency notification/evacuation systems at least once per semester. Tests include the text message/email/social media/desktop computer alert systems, fire alarm system and the college's home page. In addition to numerous activations throughout the year for weather events and other emergencies, the e2campus alert system is tested during Spring and Fall semesters.

In evacuation is required, the college will follow the steps outlined in its Emergency Plan. Students and employees would be directed via e2campus alerts to leave buildings and avoid specified hazardous areas on campus. Security personnel, assisted by local police, will direct the evacuation process and traffic flow exiting campus. In addition, Security & Safety works with local police agencies at all three campuses to ensure that police responders are familiar with the campuses. The college also participates in emergency drills when requested by local public safety and public health authorities. In March of 2019, Security & Safety participated with the Bristol Township Police Department in an active shooter exercise at the Lower Bucks Campus. Shelter-in-Place drills, which include evacuation, are conducted annually.



Bristol Township Police conducted an active shooter drill at the Lower Bucks Campus in March, 2019

CAMPUS CRIME AND PREPARATION OF THE ANNUAL SECURITY REPORT:

Bucks County Community College is committed to the accurate reporting of crimes on campus. These statistics are compiled from information contained within official Office of Security and Safety incident reports, Student Affairs reports, applicable police reports, and information received from officials of the college with significant responsibility for student activities. To this end, the college has trained its Campus Security Authorities (CSA), as defined by federal law, regarding their duty to report all crimes to the Office of Security and Safety for inclusion in the annual disclosure of crime statistics.

Professional counselors, as defined by federal law, who act in such capacities, have been advised that, while they are not obligated to report crimes for the purpose of compiling these statistics, they are encouraged, when they deem it appropriate, to inform the persons they are counseling of their ability to report any crimes on a voluntary, confidential basis for inclusion. Beginning with the 2014 edition of the Campus Crime report, available data for Domestic Violence, Dating Violence and Stalking have been included, as mandated by the Violence Against Women Reauthorization Act of 2013.



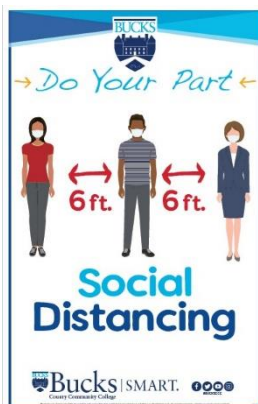
FOR ADDITIONAL INFORMATION CONTACT:

1. Executive Director of Security and Safety: (215) 968-8394
2. Vice-President for Administration: (215) 968-8300
3. Associate Provost: (215) 968-8213
4. Director of Student Life: (215) 968-8257
5. Chief Diversity, Equity & Inclusion Officer: (215) 968-8093

BUCKS COUNTY COMMUNITY COLLEGE & COVID-19:



BCCC pandemic protocols require those visiting campus to complete a daily health screening.



Mask wearing, social distancing and rigorous cleaning are important tools in BCCC's coronavirus mitigation strategy.

As with virtually every institution of higher education in the United States, Bucks County Community College along with its students and employees have been significantly impacted by the COVID-19 pandemic in 2020.

The initial outbreak of the pandemic led the college to cancel all events and pivot to remote learning in mid-March, 2020. A working group of key employees known as the Green Team was created to plan the college's ongoing response to the pandemic. The Green Team is comprised of representatives from faculty, administration, I.T., Security and Physical Plant. The group, which reports to Bucks County Community College President Stephanie Shanblatt, is chaired by the Provost.

Drawing upon information and recommendations from the Pennsylvania Department of Education, Pennsylvania Department of Health, Bucks County Health Department and the Centers for Disease Control & Prevention (CDC), the College created a Campus Health & Safety Plan which can be viewed at:

<https://www.bucks.edu/coronavirus/campus/>. The link to the plan is prominently featured on the college's home page and includes information about the pandemic as well as links to the CDC website. Additional COVID-19 information and resources have been made available to students and employees via the college's LiveSafe app as well as via signage placed throughout each of the campuses.

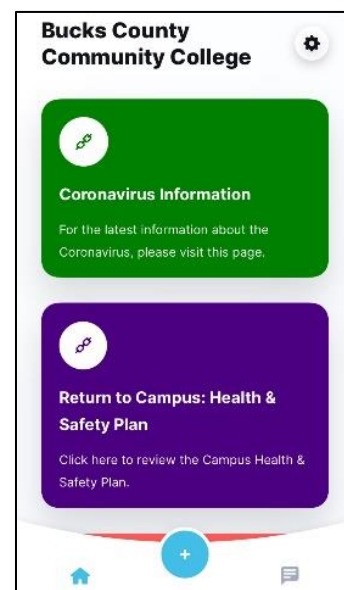
In addition, data on confirmed COVID-19 cases occurring among infected individuals who had been on campus is collected and published on the college's website. Names are redacted for privacy. The college coordinates its handling of such cases with the Bucks County Health Department.

The college returned to a limited schedule of face-to-face classes in the summer of 2020. Universal masking, social distancing, HVAC improvements and other safety considerations such as regular sanitization and the installation of plexiglass screens in certain locations are key components of the return to campus plan. In addition, those wishing to enter campus buildings are required to successfully complete a daily health screening process.

This carefully-planned return allowed the college to resume coursework that is not suitable for remote learning such as healthcare clinical assignments, science labs and other courses with significant hands-on components. The approach has proven successful and continued into the Fall, 2020 semester.

Planning and preparation are viewed as essential components in the college's pandemic response. For that reason, in October, 2020, the Office of Security & Safety conducted a tabletop exercise designed to evaluate and improve its response to the impact on College operations caused by a potential COVID-19 exposure or outbreak among essential Security personnel.

The Green Team continues to meet regularly to monitor the college's progress and plan for contingencies in the rapidly-evolving pandemic landscape.



COVID-19 information including BCCC's Health & Safety Plan can be accessed via our LiveSafe app.

BUCKS COUNTY COMMUNITY COLLEGE CRIME STATISTICS 2017 – 2019

TABLE 1

The Pennsylvania College and University Security Information Act mandates the release of crime statistics and rates to matriculated students and employees. The listed index rate is per 100,000 population. Campus crime rates were computed using the student population figure for the start of the Fall semester (in 2019 this figure was 7,418).

Calendar Years	2017		2018		2019	
	ACTUAL	INDEX	ACTUAL	INDEX	ACTUAL	INDEX
Part I Offenses						
Murder & Non-Negligent Manslaughter	0	0	0	0	0	0
Negligent Manslaughter	0	0	0	0	0	0
Rape	1	11.28	0	0	0	0
Robbery	0	0	0	0	0	0
Aggravated Assault	0	0	0	0	0	0
Burglary	0	0	0	0	0	0
Theft - Larceny	13	146.71	10	128.62	12	161.77
Vehicle Theft	0	0	0	0	0	0
Arson	0	0	1	12.86	0	0
TOTAL	14	157.99	11	141.48	12	161.77
Part II Offenses						
Other Assault	3	33.86	5	64.31	3	40.44
Forgery	0	0	0	0	0	0
Counterfeiting	0	0	0	0	0	0
Fraud	1	11.28	0	0	1	13.48
Embezzlement	0	0	0	0	0	0
Stolen Property	0	0	0	0	1	13.48
Vandalism	26	293.42	24	308.68	8	107.84
Weapons	0	0	0	0	0	0
Prostitution	0	0	0	0	0	0
Other Sex Offenses	0	0	0	0	2	26.96
Drug Abuse Violations	7	81.76	2	25.72	2	26.96
Gambling	0	0	0	0	0	0
Family Offenses	0	0	0	0	0	0
Driving under the Influence	0	0	0	0	0	0
Liquor Law	1	11.28	0	0	0	0
Drunkenness	0	0	3	38.58	0	0
Disorderly Conduct	2	22.57	5	64.31	2	26.96
Vagrancy	0	0	0	0	0	0
All Others	0	0	0	0	0	0
TOTAL	40	451.42	39	501.61	19	256.13

These statistics reflect the number of incidents reported to the Office of Security and Safety. The figures do not indicate actual criminal prosecutions or student judicial actions, or the results of either.

NOTES: * In 2019, one incident of vandalism targeted religious affiliation.

BUCKS COUNTY COMMUNITY COLLEGE CRIME STATISTICS 2017 – 2019

TABLE 2

	On-Campus Newtown			On-Campus UBC-Perkasie			On-Campus LBC-Bristol			Non-Campus Property			Public Property			TOTALS		
Calendar Years	'17	'18	'19	'17	'18	'19	'17	'18	'19	'17	'18	'19	'17	'18	'19	'17	'18	'19
Murder & Non-Negligent Manslaughter	0	0	0	0	0	0	0	0	0	0	0	0	0	0	0	0	0	0
Negligent Manslaughter	0	0	0	0	0	0	0	0	0	0	0	0	0	0	0	0	0	0
Forcible Sex Offenses	1	0	2	0	0	0	0	0	0	0	0	0	0	0	0	1	0	2
Non-Forcible Sex Offenses	0	0	0	0	0	0	0	0	0	0	0	0	0	0	0	0	0	0
Robbery	0	0	0	0	0	0	0	0	0	0	0	0	0	0	0	0	0	0
Aggravated Assault	0	0	0	0	0	0	0	0	0	0	0	0	0	0	0	0	0	0
Burglary	0	0	0	0	0	0	0	0	0	0	0	0	0	0	0	0	0	0
Arson	0	1	0	0	0	0	0	0	0	0	0	0	0	0	0	0	1	0
Larceny-Theft	13	8	10	0	1	1	0	1	0	0	0	0	0	0	1	13	10	12
Motor Vehicle Theft	0	0	0	0	0	0	0	0	0	0	0	0	0	0	0	0	0	0
Liquor Violations – Arrests	0	0	0	0	0	0	0	0	0	0	0	0	0	0	0	0	0	0
Drug Related Violations – Arrests	4	0	0	0	0	0	2	0	0	0	0	0	0	0	0	6	0	0
Weapons Possession Arrests	0	0	0	0	0	0	0	0	0	0	0	0	0	0	0	0	0	0
Liquor Violations – Referrals **	0	0	0	0	0	0	0	0	0	0	0	0	0	0	0	0	0	0
Drug Related Violations- Referrals **	1	0	0	0	0	0	0	1	0	0	0	0	0	0	0	1	1	0
Weapons Possession Referrals **	0	0	0	0	0	0	0	0	0	0	0	0	0	0	0	0	0	0
Hate Crimes ***	0	0	0	0	0	0	0	0	0	0	0	0	0	0	1	0	0	1
Domestic Violence++	0	0	0	0	0	0	0	0	0	0	0	0	0	0	0	0	0	0
Dating Violence++	1	2	0	0	0	0	0	0	0	0	0	0	0	0	0	1	2	0
Stalking++	0	0	1	0	0	0	0	1	0	0	0	0	0	0	0	0	1	1

**** REFERRALS FOR CAMPUS DISCIPLINARY ACTION:**

In addition to arrests, the Clery Act requires the disclosure of persons referred for campus disciplinary action for liquor law violations, drug-related violations, and weapons possession. Because of the seriousness with which Bucks County Community College treats such offenses, students considered to be in violation of liquor or drug laws or applicable College policies are referred to the Student Life Office for disciplinary action, ranging from a written warning to expulsion.

*** Number of reported crimes listed above or other crimes involving bodily injury to any person that manifested evidence that the victim(s) were intentionally selected because of their actual or perceived race, gender, religion, sexual orientation, ethnicity, or disability.

++ Statistics presented in compliance with the Violence Against Women Reauthorization Act.

Bucks County Community College

Race, Gender, and Religion Based Incidents

TABLE 3

Crime	2019 Total	Race	Gender	Religion	Sexual Orientation	Ethnicity	Disability	Gender Identity	National Origin
Murder	0	0	0	0	0	0	0	0	0
Manslaughter	0	0	0	0	0	0	0	0	0
Sex offenses:	0	0	0	0	0	0	0	0	0
Forcible	0	0	0	0	0	0	0	0	0
Non-forcible	0	0	0	0	0	0	0	0	0
Robbery	0	0	0	0	0	0	0	0	0
Aggravated Assault	0	0	0	0	0	0	0	0	0
Burglary	0	0	0	0	0	0	0	0	0
Motor Vehicle theft	0	0	0	0	0	0	0	0	0
Arson	0	0	0	0	0	0	0	0	0
Other crimes involving Bodily Injury	0	0	0	0	0	0	0	0	0
Other crimes with no Bodily Injury	1	0	0	1	0	0	0	0	0

Crime Statistics recorded in compliance with the Jeanne Cleary Disclosure of Campus Security Policy & Campus Crime Statistics Act, Section 485 (f) (20 U.S.C. 1092 (f) as amended 1998 and the State Board of Education, College, and University Security Information Act (Act 73 of 1988).

The Annual Security Report is prepared in accordance with 20 U.S.C. 1092 (f) (7), Section 485 (f), Campus Security Policy and Campus crime statistics as amended and Pennsylvania Law 448, No. 73 as amended.

APPENDIX A

Federal Bureau of Investigation Uniform Crime Reporting/National Incident-Based Reporting System Crime Definitions

Excerpted from the Implementing Regulations of the "Jeanne Cleary Disclosure of Campus Security Policy and Campus Crime Statistics Act" (originally the Campus Security Act) originally published in the Federal Register on April 29, 1994 (Vol. 59, No. 82) and November 1, 1999 (Vol 64, No. 210).

The following definitions are to be used for reporting the crimes listed in 34 CFR sec. 668.46 (previously 668.47) in accordance with the Federal Bureau of Investigation's Uniform Crime Reporting Program. The definitions for murder, robbery, aggravated assault, burglary, motor vehicle theft, weapon law violations, drug abuse violations and liquor law violations are excerpted from the Uniform Crime Reporting Handbook. The definitions of forcible and non-forcible sex offenses are excerpted from the National Incident-Based Reporting System Edition of the Uniform Crime Reporting Handbook.

Crime Definitions From the Uniform Crime Reporting Handbook:

Arson - Any willful or malicious burning or attempt to burn, with or without intent to defraud, a dwelling house, public building, motor vehicle or aircraft, personal property of another, etc.

Criminal Homicide-Manslaughter by Negligence - The killing of another person through gross negligence.

Criminal Homicide-Murder and Non-negligent Manslaughter - The willful (non-negligent) killing of one human being by another.

Robbery - The taking or attempting to take anything of value from the care, custody, or control of a person or persons by force or threat of force or violence and/or by putting the victim in fear.

Aggravated Assault - An unlawful attack by one person upon another for the purpose of inflicting severe or aggravated bodily injury. This type of assault usually is accompanied by the use of a weapon or by means likely to produce death or great bodily harm. (It is not

necessary that injury result from an aggravated assault when a gun, knife, or other weapon is used which could and probably would result in serious personal injury if the crime were successfully completed.)

Burglary - The unlawful entry of a structure to commit a felony or a theft. For reporting purposes, this definition includes unlawful entry with intent to commit a larceny or felony; breaking and entering with intent to commit a larceny; housebreaking; safecracking; and all attempts to commit any of the aforementioned.

Motor Vehicle Theft - The theft or attempted theft of a motor vehicle. (Classify as motor vehicle theft all cases where automobiles are taken by persons not having lawful access even though the vehicles are later abandoned, including joyriding.)

Weapon Law Violations - The violation of laws or ordinances dealing with weapon offenses, regulatory in nature, such as manufacture, sale, or possession of deadly weapons; carrying deadly weapons, concealed or openly; furnishing deadly weapons to minors; aliens possessing deadly weapons; and all attempts to commit any of the aforementioned.

Drug Abuse Violations - Violations of State and local laws relating to the unlawful possession, sale, use, growing, manufacturing, and making of narcotic drugs. The relevant substances include opium or cocaine and their derivatives; marijuana; synthetic narcotics; and dangerous non-narcotic drugs.

Liquor Law Violations - The violation of laws or ordinances prohibiting: the manufacture, sale, transporting, furnishing, possessing of intoxicating liquor; maintaining unlawful drinking places; bootlegging; operating a still; furnishing liquor to a minor or intemperate person; using a vehicle for illegal transportation of liquor; drinking on a train or public conveyance; and all attempts to commit any of the aforementioned. (Drunkenness and driving under the influence are not included in this definition.)

Sex Offenses Definitions From the National Incident-Based Reporting System Edition of the Uniform Crime Reporting Program:

Sex Offenses-Forcible - Any sexual act directed against another person, forcibly and/or against that person's will; or not forcibly or against the person's will where the victim is incapable of giving consent.

A. Forcible Rape-The carnal knowledge of a person, forcibly and/or against that person's will; or not forcibly or against the person's will where the victim is incapable of giving consent because of his/her temporary or permanent mental or physical incapacity (or because of his/her youth).

B. Forcible Sodomy-Oral or anal sexual intercourse with another person, forcibly and/or against that person's will; or not forcibly against the person's will where the victim is incapable of giving consent because of his/her youth or because of his/her temporary or permanent mental or physical incapacity.

C. Sexual Assault With An Object-The use of an object or instrument to unlawfully penetrate, however slightly, the genital or anal opening of the body of another person, forcibly and/or against that person's will; or not forcibly or against the person's will where the victim is incapable of giving consent because of his/her youth or because of his/her temporary or permanent mental or physical incapacity.

D. Forcible Fondling-The touching of the private body parts of another person for the purpose of sexual gratification, forcibly and/or against that person's will; or, not forcibly or against the person's will where the victim is incapable of giving consent because of his/her youth or because of his/her temporary or permanent mental incapacity.

Sex Offenses-Nonforcible:

Unlawful, nonforcible sexual intercourse.

A. Incest-Nonforcible sexual intercourse between persons who are related to each other within the degrees wherein marriage is prohibited by law.

B. Statutory Rape-Nonforcible sexual intercourse with a person who is under the statutory age of consent.

Source: Federal Register, April 29, 1994, Vol. 59, No. 82; Federal Register, November 1, 1999, Vol. 64, No. 210.

This information is provided as a part of Bucks County Community College's continuing commitment to safety and security on campus in compliance with the College and University Security Information Act of Pennsylvania and the Jeanne Clery Disclosure of Campus Security Policy and Campus Crime Statistics Act. Concerns, questions, or complaints related to this document or the applicable statutes should be directed to the Executive Director of Security and Safety either by mail at Bucks County Community College 275 Swamp Rd. Newtown, PA 18940, or by telephone at (215) 968-8394.

APPENDIX B – FEDERAL DRUG LAW VIOLATION PENALTIES

FEDERAL TRAFFICKING PENALTIES—

DRUG/SCHEDULE	QUANTITY	PENALTIES	QUANTITY	PENALTIES
Cocaine (Schedule II)	500–4999 grams mixture	First Offense: Not less than 5 yrs, and not more than 40 yrs. If death or serious injury, not less than 20 or more than life. Fine of not more than \$5 million if an individual, \$25 million if not an individual. Second Offense: Not less than 10 yrs, and not more than life. If death or serious injury, life imprisonment. Fine of not more than \$8 million if an individual, \$50 million if not an individual.	5 kgs or more mixture	First Offense: Not less than 10 yrs, and not more than life. If death or serious injury, not less than 20 or more than life. Fine of not more than \$10 million if an individual, \$50 million if not an individual. Second Offense: Not less than 20 yrs, and not more than life. If death or serious injury, life imprisonment. Fine of not more than \$20 million if an individual, \$75 million if not an individual. 2 or More Prior Offenses: Life imprisonment. Fine of not more than \$20 million if an individual, \$75 million if not an individual.
Cocaine Base (Schedule II)	28–279 grams mixture		280 grams or more mixture	
Fentanyl (Schedule II)	40–399 grams mixture		400 grams or more mixture	
Fentanyl Analogue (Schedule I)	10–99 grams mixture		100 grams or more mixture	
Heroin (Schedule I)	100–999 grams mixture		1 kg or more mixture	
LSD (Schedule I)	1–9 grams mixture		10 grams or more mixture	
Methamphetamine	5–49 grams pure or		50 grams or more pure or	
(Schedule II)	50–499 grams mixture		500 grams or more mixture	
PCP (Schedule II)	10–99 grams pure or 100–999 grams mixture		100 gm or more pure or 1 kg or more mixture	
PENALTIES				
Other Schedule I & II drugs (and any drug product containing Gamma Hydroxybutyric Acid)	Any amount	First Offense: Not more than 20 yrs. If death or serious injury, not less than 20 yrs, or more than life. Fine \$1 million if an individual, \$5 million if not an individual. Second Offense: Not more than 30 yrs. If death or serious bodily injury, life imprisonment. Fine \$2 million if an individual, \$10 million if not an individual.		
Flunitrazepam (Schedule IV)	1 gram			
Other Schedule III drugs	Any amount	First Offense: Not more than 10 years. If death or serious injury, not more than 15 yrs. Fine not more than \$500,000 if an individual, \$2.5 million if not an individual. Second Offense: Not more than 20 yrs. If death or serious injury, not more than 30 yrs. Fine not more than \$1 million if an individual, \$5 million if not an individual.		
All other Schedule IV drugs	Any amount			
Flunitrazepam (Schedule IV)	Other than 1 gram or more	First Offense: Not more than 5 yrs. Fine not more than \$250,000 if an individual, \$1 million if not an individual. Second Offense: Not more than 10 yrs. Fine not more than \$500,000 if an individual, \$2 million if other than an individual.		
All Schedule V drugs	Any amount			

APPENDIX B (continued)

FEDERAL TRAFFICKING PENALTIES—MARIJUANA—

DRUG	QUANTITY	1st OFFENSE	2nd OFFENSE *
Marijuana (Schedule I)	1,000 kg or more marijuana mixture; or 1,000 or more marijuana plants	Not less than 10 yrs. or more than life. If death or serious bodily injury, not less than 20 yrs., or more than life. Fine not more than life. Fine not more than \$10 million if an individual, \$50 million if other than an individual.	Not less than 20 yrs. or more than life. If death or serious bodily injury, life imprisonment. Fine not more than \$20 million if an individual, \$75 million if other than an individual.
Marijuana (Schedule I)	100 kg to 999 kg marijuana mixture; or 100 to 999 marijuana plants	Not less than 5 yrs. or more than 40 yrs. If death or serious bodily injury, not less than 20 yrs., or more than life. Fine not more than life. Fine not more than \$5 million if an individual, \$25 million if other than an individual.	Not less than 10 yrs. or more than life. If death or serious bodily injury, life imprisonment. Fine not more than \$20 million if an individual, \$75 million if other than an individual.
Marijuana (Schedule I)	More than 10 kgs hashish; 50 to 99 kg marijuana mixture More than 1 kg of hashish oil; 50 to 99 marijuana plants	Not less than 20 yrs. If death or serious bodily injury, not less than 20 yrs., or more than life. Fine \$1 million if an individual, \$5 million if other than an individual.	Not less than 30 yrs. If death or serious bodily injury, life imprisonment. Fine \$2 million if an individual, \$10 million if other than an individual.
Marijuana (Schedule I)	Less than 50 kilograms marijuana (but does not include 50 or more marijuana plants regardless of weight) marijuana plants; 1 to 49 marijuana plants;	Not less than 5 yrs. Fine not more than \$250,000, \$1 million if other than an individual	Not less than 10 yrs. Fine \$500,000 if an individual, \$2 million if other than individual
Hashish (Schedule I)	10 kg or less		
Hashish Oil (Schedule I)	1 kg or less		

*The minimum sentence for a violation after two or more prior convictions for a felony drug offense have become final is a mandatory term of life imprisonment without release and a fine up to \$20 million if an individual and \$75 million if other than an individual.

APPENDIX C – PENNSYLVANIA DRUG LAW VIOLATION PENALTIES

Pennsylvania Marijuana Possession Penalties

Possession of Marijuana (pot) Penalties in PA are as follows:

- For 30 grams or less, you are facing misdemeanor charges of up to 30 days in jail, and a fine of \$500.
- For possession of more than 30 grams, the penalties go up to 1 year in jail and \$5000 in fines. Automatic six month loss of license.
- If you are a first time marijuana offender, it is possible to get probation without a verdict. For second (2nd) offense possession charges, or multiple subsequent offenses, the penalties may double.
- If you have more than 30 grams of marijuana, you run the risk of being charged with possession with intent to deliver or distribute in many cases.

Pennsylvania Drug Possession Penalties

Possession of other Controlled Substances Penalties (Heroin, Cocaine, LSD/Acid, Ecstasy/MMDA, Meth, and prescription drugs including Vicodin and Oxycontin or illegal steroids)

- Up to one year in prison, and/or a \$5,000 fine first (1st) offense.
- Up to two years in prison for a second (2nd) offense.
- Up to three years in prison for a third (3rd) offense.
- Possession of more than five grams of crack (cocaine) may be subject to a minimum penalty of 5 years in prison.

Possession of Drug Paraphernalia, or Selling/distributing Marijuana

- Up to 1 year in jail and/or a fine of up to \$2500.
- For selling to a minor, under Pennsylvania Drug laws, it can be a felony charge of up to 2 years in jail and a \$5000 fine.

APPENDIX D – PENNSYLVANIA UNDERAGE DRINKING PENALTIES

PA CRIMES CODE § 6308. Purchase, consumption, possession, or transportation of liquor or malt or brewed beverages.

(a) Offense defined.--A person commits a summary offense if he, being less than 21 years of age, attempts to purchase, purchases, consumes, possesses, or knowingly and intentionally transports any liquor or malt or brewed beverages, as defined in section 6310.6 (relating to definitions). For the purposes of this section, it shall not be a defense that the liquor or malt or brewed beverage was consumed in a jurisdiction other than the jurisdiction where the citation for underage drinking was issued.

(b) Penalty.--A person convicted of violating subsection (a) may be sentenced to pay a fine of not more than \$500 for the first violation and not more than \$1,000 for the second and each subsequent violation.