






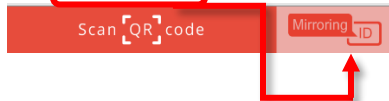
Using Mirroring 360 on your Smartphone or Tablet

Mirroring 360 allows you to wirelessly display content from your smartphone, tablet or Bucks County Community College issued laptop (see separate directions) to the projection screen in the classroom. The display on your own device becomes the projected content displayed in the classroom.

1. Download the free Mirroring Assist app (iOS)  or Mirroring 360 Sender app (Android)  from the app store on your smartphone or tablet to your device.
2. Turn on your classroom teacher's station computer.
3. Turn on the classroom projector.
4. Double click on the Mirroring 360 on the desktop of your classroom teacher's station computer. 
5. Open the Mirroring Assist app on your device.  or 
6. Tap on "I've already setup Mirroring360. Start mirroring now."

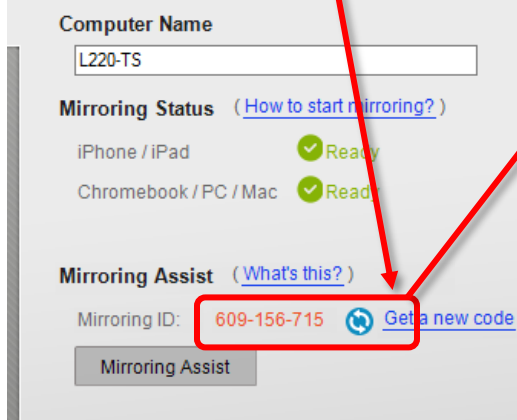
I've already setup Mirroring360.
Start mirroring now.

7. Tap **mirroring ID** on the bottom right of the display screen

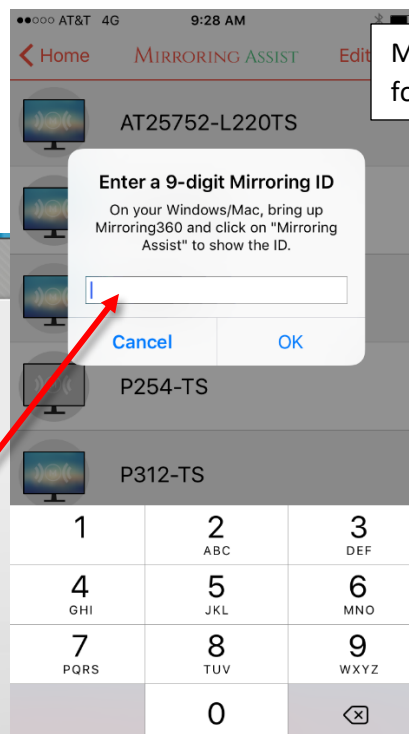


8. Enter the **Mirroring ID code** from the Mirroring 360 window on the teacher's station into your device and tap OK on your device.

Mirroring360 window from
computer at teacher's station

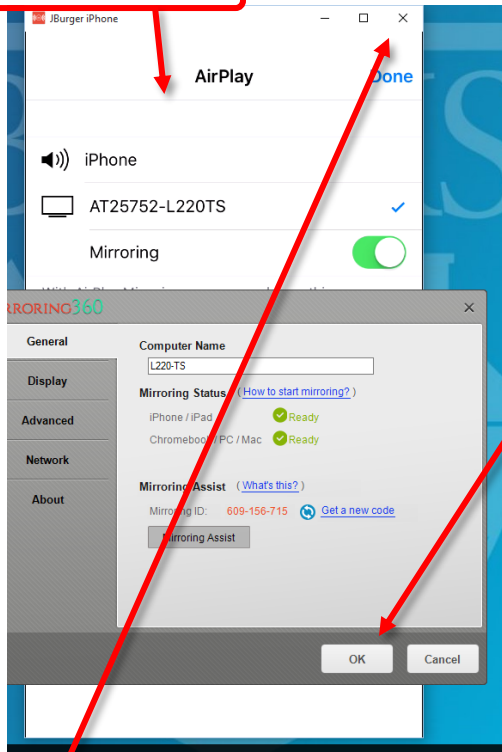


Mirroring Assist/Mirroring Sender
for smartphone and tablet devices



9. Follow the directions displayed on your smartphone or tablet device to complete the process of mirroring your to the classroom teacher's station computer.

10. On the classroom teacher's station computer, you will need to **click OK** on the Mirroring360 window to see the **mirrored content**.



11. **Click the X** of the window with the mirrored content to stop mirroring.

Note: The directions you're receiving when using Mirroring 360 will tell you to swipe up from the bottom of your iOS device to open the device control panel. If you are using a newer iPhone or iPad or a more recent version of iOS, you may need to swipe from the top right to bring up the device control panel.