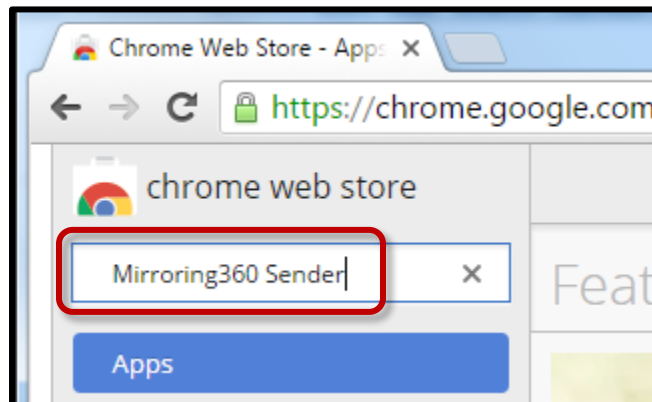


Mirroring360 – Connecting Your Laptop

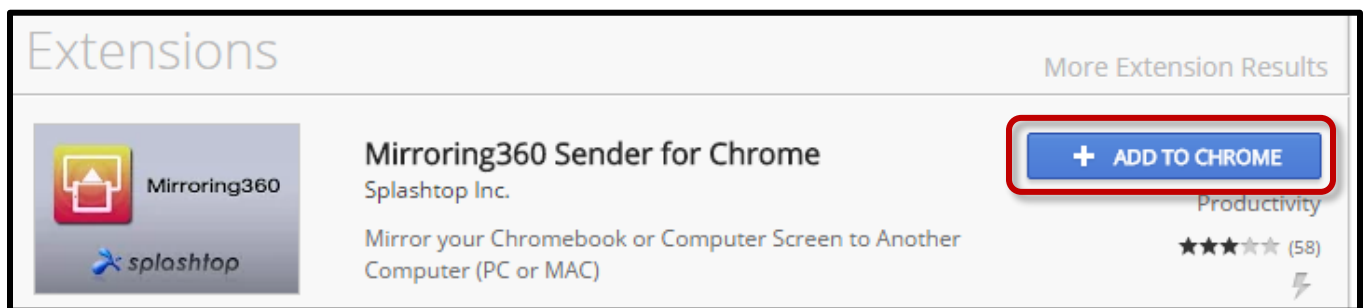
To use Mirroring360 on your personal laptop, Bucks issued laptop, Library laptops, or on laptops stored in carts in your classroom, you will need to install a special Chrome plugin. You must be connected to the BUCKSEmployee on your personal or Bucks issued laptop. The Library laptops or laptops in carts in your classroom must be on the BucksNet-Device wireless network.

For mobile device Mirroring360, please see the separate tutorial.

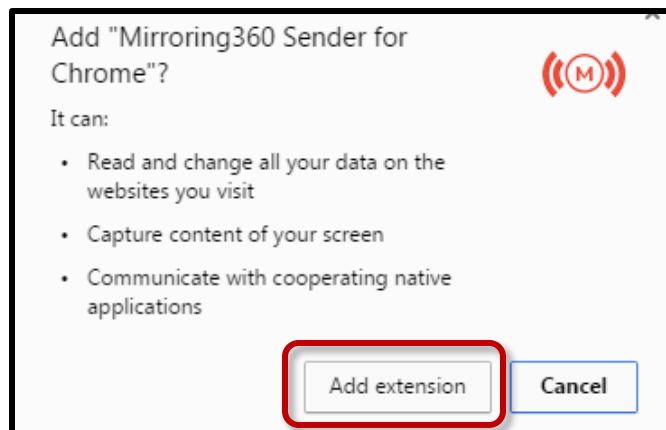
1. Open Chrome and visit the Chrome Web Store. Open a new tab, click the Apps bookmark, and click Web Store. You can also copy and paste the following link into Chrome.
https://chrome.google.com/webstore/category/apps?utm_source=chrome-ntp-icon. Search for **Mirroring360 Sender** in the upper left corner and press Enter.



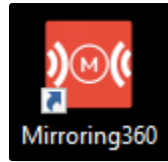
2. Find the Mirroring360 Sender for Chrome and click **Add To Chrome**.



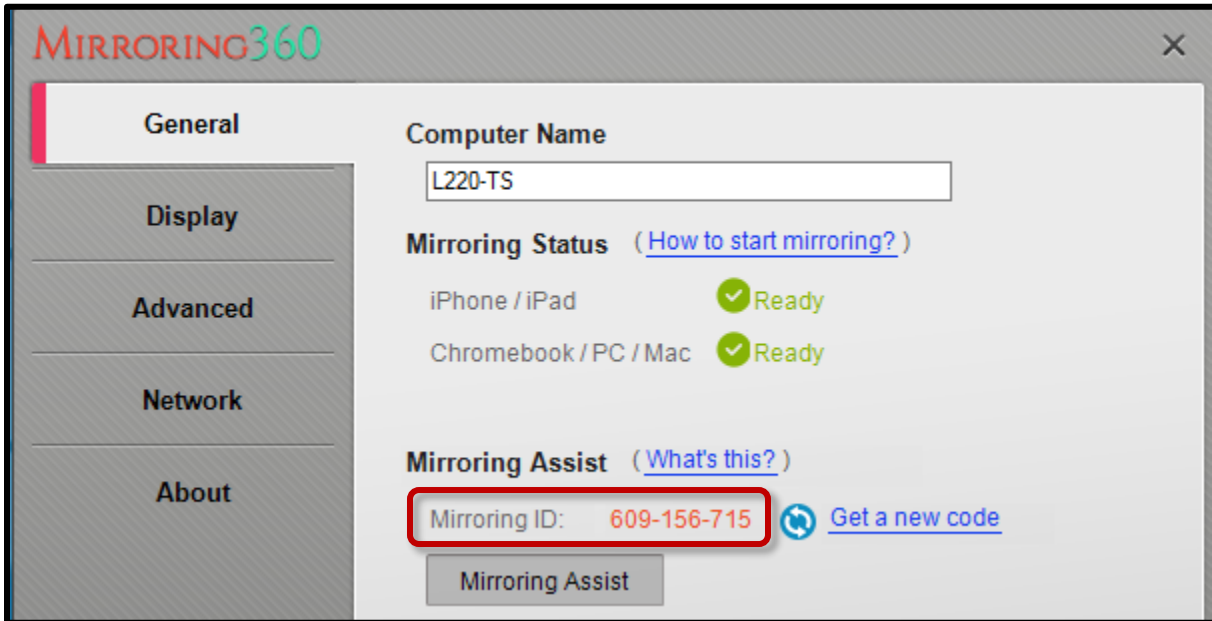
3. Click the **Add extension** button.



4. Open the Mirroring360 application on the teacher station desktop.



5. Look for the unique 9 digit code Mirroring ID. This will be generated uniquely for each classroom and can potentially change each time you log into the computer. It is recommended that you type this code in each time instead of clicking the Auto discovered classrooms.



6. There will be a Mirroring360 icon in the upper right corner of Chrome. Click this icon and you will see a Mirroring ID entry field. Enter the 9 digit Mirroring ID and click the arrow to get started.

