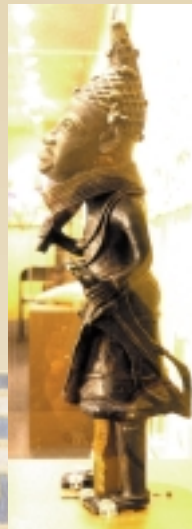
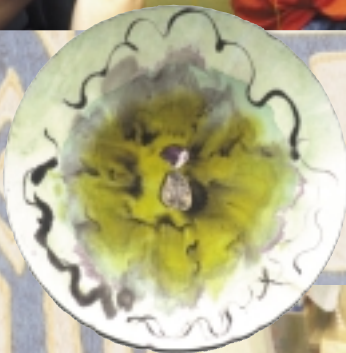


# IMPACT AFRICA!

**ART, CULTURE & INSPIRATION**



## TRAVELING THROUGHOUT BUCKS COUNTY

September 2000–June 2001

### September 2000

19–21 Bucks County Community College, *Newtown*  
(Open House) ★  
25–28 Alta S. Leary Elementary School, *Warminster*  
29–Oct. 3 St. John Bosco Elementary School, *Harboro*

### October 2000

4–11 Pine Run Elementary School, *New Britain*  
12–16 Tamanend Middle School, *Warrington*  
17–19 George Washington Elementary School,  
*Levittown*  
20–24 Morrisville Middle/Senior School, *Morrisville*  
25–27 Pennwood Middle School, *Yardley*  
30–Nov. 3 Maple Point Middle School, *Langhorne*

### November 2000

6–13 Samuel Everitt Elementary School, *Levittown*  
14–20 Oxford Valley Elementary School, *Fairless Hills*  
21–29 Village Park Elementary School, *Fairless Hills*  
30–Dec. 5 Valley Elementary School, *Bensalem*

### December 2000

6–8 Oliver Heckman Elementary School, *Langhorne*  
12–20 George School, *Newtown*

### January 2001

3–4 Our Lady of Fatima School, *Bensalem*  
5–10 Benjamin Rush Elementary School, *Bensalem*  
11–18 Cecelia Snyder Middle School, *Bensalem*  
19–23 Robert K. Shafer Middle School, *Bensalem*  
24–30 Russell C. Struble Elementary School, *Bensalem*  
31–Feb. 1 St. Mark School, *Bristol*

### February 2001

2–7 Ben Franklin Elementary School, *Levittown*  
8–13 Ralph Waldo Emerson Elementary School, *Levittown*  
14–20 Walt Disney Elementary School, *Levittown*  
21–27 Manor Elementary School, *Levittown*  
28–Mar. 2 Valley Elementary School, *Morrisville*

### March 2001

5–6 Holy Trinity School, *Morrisville*  
7–8 Grey Nun Academy School, *Yardley*  
9–12 Buckingham Friends School, *Lahaska*  
13–16 Buckingham Elementary School, *Buckingham*  
19–20 New Hope Solebury Middle School, *New Hope*  
21–26 New Hope Solebury Elementary School, *Solebury*  
27–Apr. 3 Groveland Elementary School, *Danboro*

### April 2001

4–6 Wrightstown Elementary School, *Wrightstown*  
9–17 Linden Elementary School, *Doylestown*  
18–23 Margaret M. Seylar Elementary School, *Perkasie*  
24–26 Pennridge High School, *Perkasie*  
27–May 2 Patricia Guth Elementary School, *Perkasie*

### May 2001

3–8 West Rockhill Elementary School, *Sellersville*  
9–10 Quakertown Christian School, *Quakertown*  
11–14 St. Isidore School, *Quakertown*  
15–18 Tohickon Valley Elementary School, *Quakertown*  
19 Quakertown Alive!, *Quakertown* ★  
21–24 Florence D. Titus Elementary School, *Warrington*  
29–June 1 Newtown Friends School, *Newtown*

### June 2001

4–8 Gayman Elementary School, *Danboro*  
11–15 Levittown Regional Library, *Levittown* ★  
18–21 Bucks County Library Center, *Doylestown* ★

★ Public Visits



**Bucks County  
Community College**  
275 Swamp Road  
Newtown, PA 18940

# IMPACT AFRICA! ART, CULTURE & INSPIRATION

features work by regional artists, Romare Bearden, J. Kadir Cannon, Keith Haring, Vincent Romaniello, Norman Rubington, Rael Salley, Rudolph Serra, Alan Soffer, Libbie Soffer, Jeanne C. Wilkinson and a selection of African art objects on loan from the permanent collection of the Martin Art Gallery at Muhlenberg College and local private collections.

*IMPACT AFRICA!* focuses on the influential nature of African art and culture. The exhibition features authentic, museum-quality African art and art objects made by West African cultural groups, Dan, Mossi, Dogon, Ashanti, Akan, Benin, and Senufo. These works include traditional African dolls, utilitarian textiles and cloths, ritual objects, beaded jewelry and other adornments, pottery, and assorted sculpture.

*IMPACT AFRICA!* highlights the artistic heritage of Africa as it relates to the work of contemporary masters and artists making art today. African art is credited for inspiring a generation of modern artists in the early decades of the 20th century, particularly Picasso and Matisse. Exhibited along side the work of African artisans are actual paintings, prints, drawings and sculpture produced by modern-day artists of the Bucks County region. These works emphasize the influence and impact of African art and culture on western art, contemporary artists and art history.

Hands-on displays, an important aspect of every Artmobile exhibit, mirror the exhibition and reinforce the concepts presented by Artmobile's professional guides. The interactive displays for *Impact Africa!* include: Beaded necklace construction; weaving; mask making; abstract art creation; electronic board games that demonstrate national flags, cultural groups, geographic regions, and Swahili language; traditional musical instruments; related reading materials; video tape display of animated myths, musical demonstrations, and artistic diversity; and mounted art historical reproductions by famous 20th century artists reflecting the importance and influence of African art.

As always, *Teachers' Manuals* are sent to each school. They provide back-ground information on the exhibition, detailed pre-visit and post-visit activities for all grade levels, and class hand-outs. The *Teachers' Manual* is intended both as a tool for the visit and as a teacher resource for years to come.

*IMPACT AFRICA!* will enlighten and inspire visitors of all ages.



## MISSION STATEMENT

Artmobile is a non-collecting, traveling museum dedicated to providing the school children and residents of Bucks County access to fine, original works of art. It is a vital component of Bucks County Community College which provides important cultural outreach programs in accordance with the college's mission. We are committed to fostering an understanding of art, art making and the value of art in our communities and our lives by exhibiting and interpreting works of art.

Artmobile travels throughout Bucks County to schools and public sites. Trained, professional Guides engage students of all ages in dialogue about the art through tours geared to their grade level. At public sites the Guide is available to provide information and engage in informal discussion with visitors. Artmobile's exhibition program includes written materials sent to teachers prior to our visit with background information about the exhibit and practical, interdisciplinary ideas for related classroom activities in order to assist them in incorporating the Artmobile experience into their curricula.

Artmobile contributes to Bucks County Community College by providing a valuable service to our community, enhancing the college's public image, and promoting its presence throughout Bucks County. Through innovative and stimulating exhibitions appropriate for all ages, Artmobile establishes the college as a center for community services and cultural activities. By providing arts education programming for county schools, Artmobile supports the college's intention of serving as a resource to the community in areas of arts instruction. Artmobile is essential to the college's commitment to collaborative leadership in the arts.

Artmobile is the outreach museum of the **Department of the Arts at Bucks County Community College.**



A portion of Artmobile's general operating funds for this fiscal year has been provided through a grant from the **Institute of Museum and Library Services**, a Federal agency that fosters innovation, leadership and a lifetime of learning.

*IMPACT AFRICA! Art, Culture & Inspiration* is supported in part by a grant from the **Pennsylvania Council on the Arts**, a state agency funded by the Commonwealth of Pennsylvania and the National Endowment for the Arts.



**Bucks County  
Community College**

275 Swamp Road  
Newtown, PA 18940

**For more information** about Artmobile and its programs, please call John Gatti, *Interim Artmobile Director*, 215-504-8531.