

Program Enrollment

Term	Associate of Arts Programs						Associate of Applied Science Program
	1009 Business Administration	2015 Management/Marketing	2016 Accounting	2054 Entrepreneurship and Small Business Management	2128 Paralegal/Legal Studies	2019 Accounting & Analytics	2204 Business
12/SP	1,024	100	139	48	111		
12/FA	1,079	121	147	48	102		
13/SP	1,017	100	122	45	92		
13/FA	1,083	106	121	62	81		
14/SP	1,043	83	110	59	74		
14/FA	1,022	101	128	49	61		
15/SP	1,020	96	106	45	59		
15/FA	1,049	103	102	48	74		
16/SP	1,014	84	77	49	69		
16/FA	1,094	66	86	49	55		
17/SP	1,029	54	74	43	53		
17/FA	1,078	67	67	51	67		
18/SP	1,000	53	57	41	54		
18/FA	1,001	51	59	53	58		
19/SP	957	42	51	52	55		
19/FA	931	35	49	59	55		
20/SP	912	37	38	54	45	1	0
20/FA	771	23	24	44	39	15	38
21/SP	704	14	23	37	33	17	40
21/FA	712	6	9	18	27	30	62
22/SP	675	5	8	11	32	29	58
22/FA	698	2	5	5	40	31	81
23/SP	651	1	3	1	30	27	72
23/FA	673				31	44	93

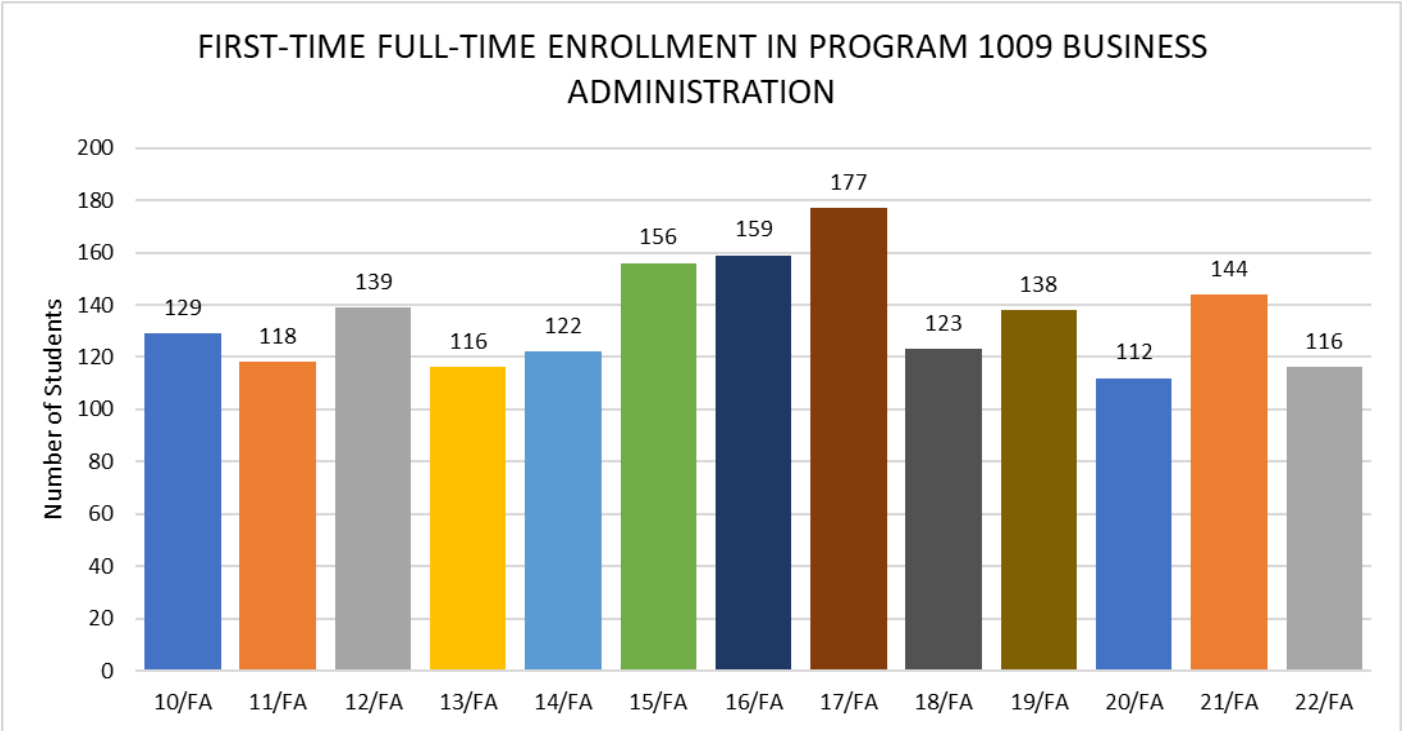
Notes:

- Enrollment as of third week in the semester.
- Programs 2015 and 2016 were deactivated in 2020. Program 2054 was deactivated in 2021.
- Programs 2204 and 2019 were activated in 2020.

Source: Enrollment by Date Archive Files at 3rd Week Census Date.

First-Time Full-Time Student Enrollment in 1009 Business Administration

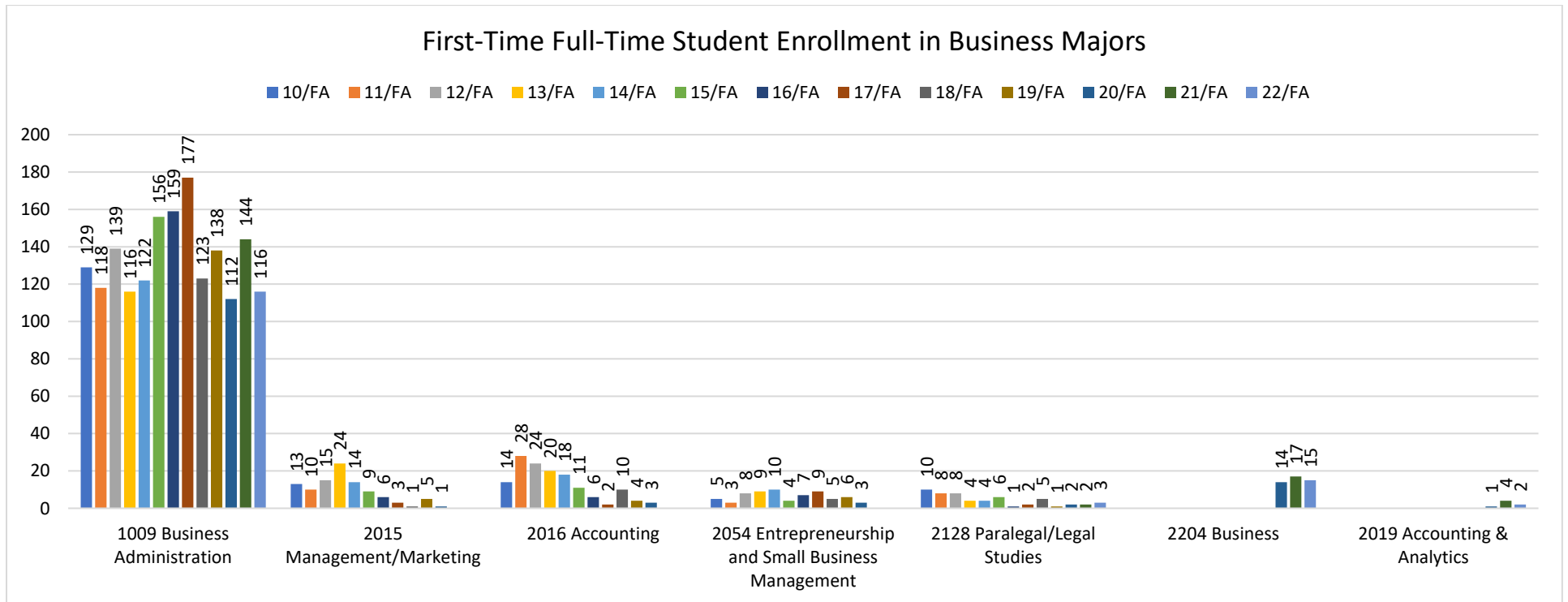
Term	Enrollment
10/FA	129
11/FA	118
12/FA	139
13/FA	116
14/FA	122
15/FA	156
16/FA	159
17/FA	177
18/FA	123
19/FA	138
20/FA	112
21/FA	144
22/FA	116



Source: IPEDS Fall Enrollment survey.

First-Time Full-Time Student Enrollment in Business Majors

Program	10/FA	11/FA	12/FA	13/FA	14/FA	15/FA	16/FA	17/FA	18/FA	19/FA	20/FA	21/FA	22/FA
1009 Business Administration	129	118	139	116	122	156	159	177	123	138	112	144	116
2015 Management/Marketing	13	10	15	24	14	9	6	3	1	5	1		
2016 Accounting	14	28	24	20	18	11	6	2	10	4	3		
2054 Entrepreneurship and Small Business Management	5	3	8	9	10	4	7	9	5	6	3		
2128 Paralegal/Legal Studies	10	8	8	4	4	6	1	2	5	1	2	2	3
2204 Business											14	17	15
2019 Accounting & Analytics											1	4	2
Total	171	167	194	173	168	186	179	193	144	154	136	167	136



Notes:

- Programs 2015 and 2016 were deactivated in 2020. Program 2054 was deactivated in 2021.
- Programs 2204 and 2019 were activated in 2020.

Source: IPEDS Fall Enrollment survey.

Transfer-Out Students by Program and Academic Year

	1009 Business Administration	2015 Management/ Marketing	2128 Paralegal/ Legal Studies	2016 Accounting	2054 Entrepreneurship and Small Business Management	2019 Accounting & Analytics	2204 Business	Total
AY 2011-2012	145	18	6	23	7			214
% of total	67.8%	8.4%	2.8%	10.7%	3.3%			100.0%
AY 2012-2013	128	15	18	25	5			207
% of total	61.8%	7.2%	8.7%	12.1%	2.4%			100.0%
AY 2013-2014	151	10	22	18	2			221
% of total	68.3%	4.5%	10.0%	8.1%	0.9%			100.0%
AY 2014-2015	222	15	7	11	4			275
% of total	80.7%	5.5%	2.5%	4.0%	1.5%			100.0%
AY 2015-2016	212	16	4	10	1			247
% of total	85.8%	6.5%	1.6%	4.0%	0.4%			100.0%
AY 2016-2017	259	8	5	10	1			294
% of total	88.1%	2.7%	1.7%	3.4%	0.3%			100.0%
AY 2017-2018	187	6	5	5	4			207
% of total	90.3%	2.9%	2.4%	2.4%	1.9%			100.0%
AY 2018-2019	205	6	3	7	4			225
% of total	91.1%	2.7%	1.3%	3.1%	1.8%			100.0%
AY 2019-2020	168	4	0	9	3			184
% of total	91.3%	2.2%	0.0%	4.9%	1.6%			100.0%
AY 2020-2021	154	4	5		0	2	10	175
% of total	88.0%	2.3%	2.9%		0.0%	1.1%	5.7%	100.0%
AY 2021-2022	107	1	0			2	11	121
% of total	88.4%	0.8%	0.0%			1.7%	9.1%	100.0%
AY 2022-2023	127		5			4	6	142
% of total	89.4%		3.5%			2.8%	4.2%	100.0%

Notes:

- Table includes only transfer-out students who did not graduate and who transferred-out after fall or spring terms.
- Programs 2015 and 2016 were deactivated in 2020. Program 2054 was deactivated in 2021.
- Programs 2204 and 2019 were activated in 2020.

Source: Credit Retention Fall-to-Fall and Spring-to-Fall archive files.

Graduation and Transfer Rates at 150% of Completion Time for Students in Business Majors

	10/FA		11/FA		12/FA		13/FA		14/FA	
	Count	Percent	Count	Percent	Count	Percent	Count	Percent	Count	Percent
Total First-Time/Full-Time Cohort	177		174		196		164		174	
Graduates within 150% Completion Time	41	23.20%	37	21.30%	55	28.10%	40	24.40%	41	23.56%
Transfers within 150% Completion Time	33	18.60%	45	25.90%	31	15.80%	41	25.00%	55	31.61%

	15/FA		16/FA		17/FA		18/FA		19/FA		20/FA	
	Count	Percent	Count	Percent	Count	Percent	Count	Percent	Count	Percent	Count	Percent
Total First-Time/Full-Time Cohort	196		199		193		155		154		136	
Graduates within 150% Completion Time	55	28.06%	68	34.17%	62	32.12%	48	30.97%	34	22.08%	41	30.15%
Transfers within 150% Completion Time	46	23.47%	49	24.62%	40	20.73%	37	23.87%	37	24.03%	26	19.12%

Notes:

- Tables include students in the following programs:
 - 1009 Business Administration
 - 2015 Management/ Marketing
 - 2016 Accounting
 - 2054 Entrepreneurship and Small Business Management
 - 2128 Paralegal/ Legal Studies
 - 2019 Accounting & Analytics
 - 2204 Business

Source: IPEDS Graduation Rates surveys.

First-Time Full-Time Student Enrollment in Business Majors

Program	10/FA	11/FA	12/FA	13/FA	14/FA	15/FA	16/FA	17/FA	18/FA	19/FA	20/FA	21/FA	22/FA
1009 Business Administration	129	118	139	116	122	156	159	177	123	138	112	144	116
2015 Management/Marketing	13	10	15	24	14	9	6	3	1	5	1		
2016 Accounting	14	28	24	20	18	11	6	2	10	4	3		
2054 Entrepreneurship and Small Business Management	5	3	8	9	10	4	7	9	5	6	3		
2128 Paralegal/Legal Studies	10	8	8	4	4	6	1	2	5	1	2	2	3
2204 Business											14	17	15
2019 Accounting & Analytics											1	4	2
Total	171	167	194	173	168	186	179	193	144	154	136	167	136

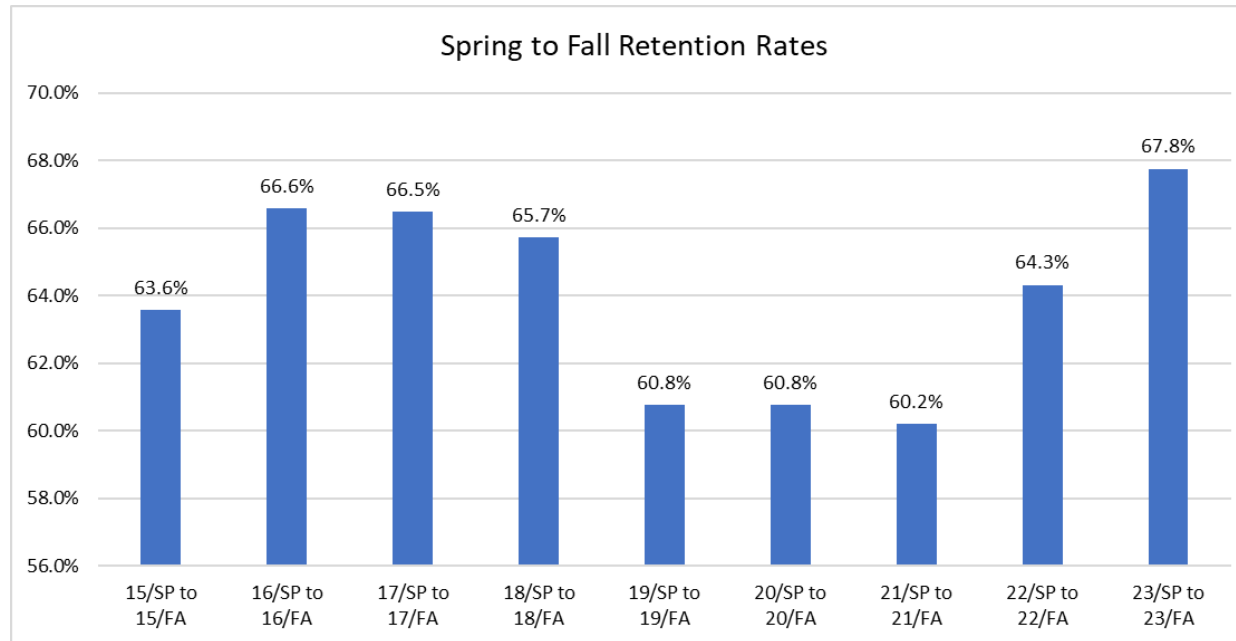
Notes:

- Programs 2015 and 2016 were deactivated in 2020. Program 2054 was deactivated in 2021.
- Programs 2204 and 2019 were activated in 2020.

Source: IPEDS Fall Enrollment survey.

Spring-to-Fall Retention of Business Majors

	Spring Enrollment	Graduate Count	Retention Pool	Re-Enrolled Following Fall	Spring to Fall Retention Rate
15/SP to 15/FA	1,305	105	1,200	763	63.6%
16/SP to 16/FA	1,274	128	1,146	763	66.6%
17/SP to 17/FA	1,241	143	1,098	730	66.5%
18/SP to 18/FA	1,199	143	1,056	694	65.7%
19/SP to 19/FA	1,156	144	1,012	615	60.8%
20/SP to 20/FA	1,086	138	948	576	60.8%
21/SP to 21/FA	871	107	764	460	60.2%
22/SP to 22/FA	818	109	709	456	64.3%
23/SP to 23/FA	785	112	673	456	67.8%



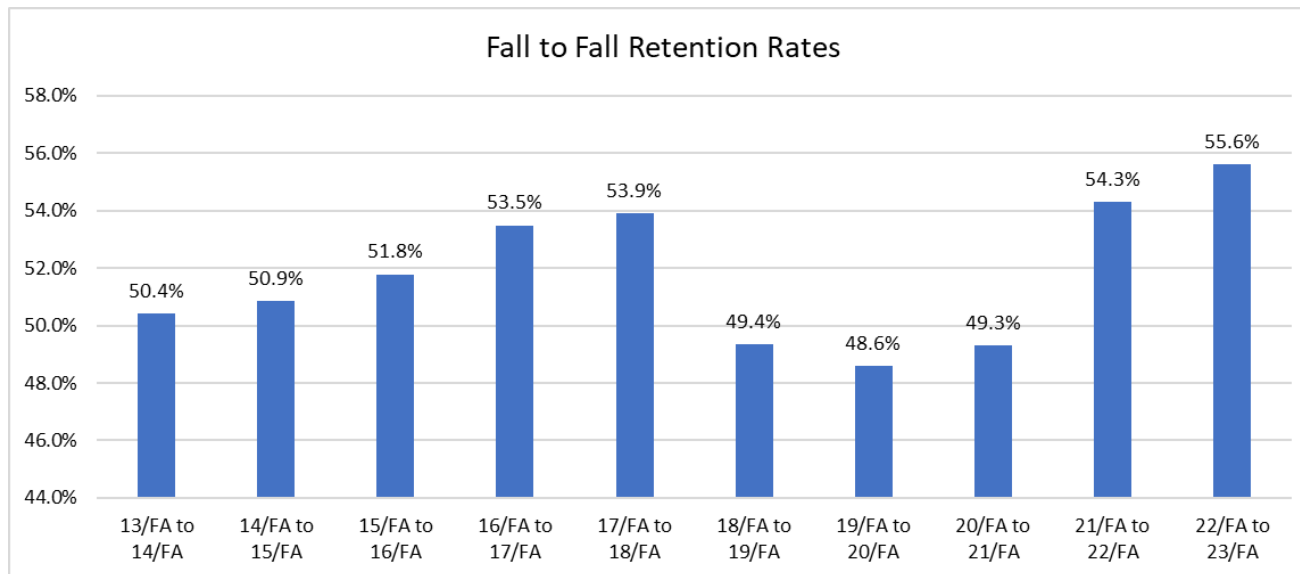
Notes:

- Retention pool excludes graduates.
- Includes students in the following programs: 1009 Business Administration, 2015 Management/ Marketing, 2016 Accounting, 2054 Entrepreneurship and Small Business Management, 2128 Paralegal/ Legal Studies, 2019 Accounting & Analytics, 2204 Business.

Source: Credit Retention Spring-to-Fall archive files.

Fall-to-Fall Retention of Business Majors

	Fall Enrollment	Graduate Count	Retention Pool	Re-Enrolled Following Fall	Fall to Fall Retention Rate
13/FA to 14/FA	1,495	156	1,339	675	50.4%
14/FA to 15/FA	1,329	169	1,160	590	50.9%
15/FA to 16/FA	1,407	204	1,203	623	51.8%
16/FA to 17/FA	1,338	205	1,133	606	53.5%
17/FA to 18/FA	1,325	210	1,115	601	53.9%
18/FA to 19/FA	1,213	198	1,015	501	49.4%
19/FA to 20/FA	1,129	199	930	452	48.6%
20/FA to 21/FA	964	183	781	385	49.3%
21/FA to 22/FA	864	157	707	384	54.3%
22/FA to 23/FA	863	167	696	387	55.6%



Notes:

- Retention pool excludes graduates.
- Includes students in the following programs: 1009 Business Administration, 2015 Management/ Marketing, 2016 Accounting, 2054 Entrepreneurship and Small Business Management, 2128 Paralegal/ Legal Studies, 2019 Accounting & Analytics, 2204 Business.

Source: Credit Retention Fall-to-Fall archive files.