

*Bucks County Community  
College*

**2011**

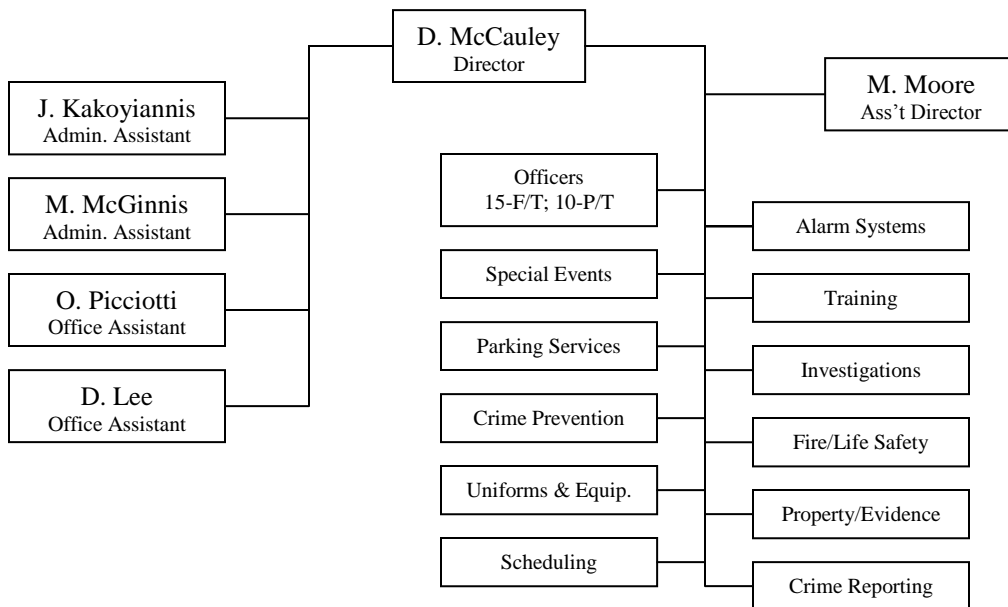
**ANNUAL  
SECURITY  
REPORT**

For Calendar Years  
2008, 2009, 2010

**275 Swamp Rd.  
Newtown, PA 18940**

*Published on September 28, 2011 by the  
Office of Security and Safety*

**DEPARTMENT OF SAFETY AND SECURITY: ORGANIZATIONAL STRUCTURE:**



**BUCKS COUNTY COMMUNITY COLLEGE 2011 ANNUAL SECURITY REPORT**

**INTRODUCTION:**

As of the Fall, 2011 semester, Bucks County Community College’s three campuses provide higher educational opportunities for 10,622 students. Approximately 39% of the college’s registered students attended on a full-time basis. Additionally, there are about 450 full-time employees of the College. The main campus, located in Newtown, Pennsylvania, extends over 260 acres, including 25 buildings. The College’s other campuses are located in Bristol and Perkasie.

Given the number of students and employees who make up the College community, security and safety services are an important component of the educational environment at Bucks County Community College. The Office of Security and Safety is responsible for security and emergency response on the campus. The Office is under the leadership of the Director who reports to the Vice President for Administrative Affairs. The Office’s Assistant Director is responsible for coordinating the day-to-day safety and security operations and activities of the Office. Located at the Newtown Campus, the Office of Security and Safety is staffed 24 hours a day by 15 full-time and 10 part-time security officers who proactively patrol the campus, supplement the Office’s communications center operations and provide security services for campus special events. Office operations are additionally supported by four administrative assistants. Security and Safety officers also patrol the Bristol and Perkasie campuses when those campuses are open. Overnight shifts and some weekend shifts at Bristol and Perkasie are staffed via contractual arrangement with a private security firm.



Officers patrol the campus by foot, vehicle and bicycle patrols. The bicycle patrol program provides a means for security officers to patrol parking lots and other areas not open to vehicle traffic, such as walkways and student gathering areas. Bicycle patrols have proven to be effective and, under some conditions, bike officers can respond to accidents, injuries, and other situations more rapidly than officers in motorized patrol vehicles.

To be successful in providing the highest degree of safety and security on the campus, it is important that community members follow good safety practices and understand that safety is the responsibility of all community members, not just those officially charged with enforcing the laws, policies, and rules. This includes taking advantage of the security escort service, properly securing personal belongings, and reporting crimes and suspicious activities. The Office of Security and Safety takes a leadership role in this area through preventive patrols, incident investigation, fire prevention, educational programs on campus safety, and crime prevention services. In addition, the Office of Security and Safety is responsible for

campus alarm and video surveillance systems, parking and traffic regulation, securing lost property, collecting evidence, and crime reporting.

Security and Safety officers receive training in professional security techniques and emergency medical care. Officers are required to be CPR (Cardio-Pulmonary Resuscitation), AED (Automated External Defibrillator) and First Responder certified. Several officers are also certified as Emergency Medical Technician (EMT). The Office of Security and Safety is located on the College’s main campus, located at 275 Swamp Rd., Cottage 4, Newtown, PA 18940 (215-968-8395).

This brochure is intended to provide information on educational programs, safety practices, and policies regarding the reporting of emergencies and campus crime rates. It is the primary objective of the Office of Security and Safety to provide a safe campus environment wherein its community members can work, study, and develop personally, professionally, intellectually and socially.

Questions, comments, or suggestions regarding the information contained within this brochure or any related safety and security issue should be forwarded to the Director of Security and Safety at (215) 968-8395.

### **CRIME REPORTING AND TIMELY WARNINGS:**



Diligent efforts are made to alert members of the campus community to crime-related issues. The college's duty to inform students of threatening situations is taken very seriously and, as a result, information related to crime and criminal activity is provided to the community in an accurate and timely fashion. Because community awareness is essential to effective crime reduction, the College will release information which can be used by students and other College community members to reduce their chances of becoming crime victims. The Office of Security and Safety issues timely warnings or safety alerts to campus community members informing them of incidents/crimes impacting the campus community and/or surrounding property. This information is disseminated to campus community members via several channels, including e-mail, text messaging, website postings, Facebook, Twitter, on-campus LCD screens, informational flyers posted at locations throughout campus, and during crime prevention presentations presented by Security and Safety personnel. The decision to issue a timely warning or safety alert is made by the Director of Security and Safety in coordination and consultation

with the President, Vice President for Administrative Affairs and Dean of Students. Safety alert notices are submitted to the campus community regarding crimes that represent a continuing threat to students and employees and which were reported to officials with significant responsibility for student and campus activities, campus safety and security, or the local police.

### **REPORTING OF CRIMINAL ACTIONS OR EMERGENCIES:**

To report a crime or emergency, members of the community should call the Office of Security and Safety by dialing 215-968-8395 or via extension 8395 from phones located on campus. Crimes can be reported anonymously on-line at <http://www.bucks.edu/tips> or by clicking on the Anonymous Crime Reporting link on the Office of Security and Safety's website: <http://www.bucks.edu/life/security/index.php>.

To obtain information or request an escort or any other security service, community members should call 215-968-8395, or extension 8395 from campus phones. Security and Safety personnel also have the ability to notify Bucks county emergency dispatchers regarding emergency situations occurring on-campus via mobile two-way radio communications systems and via the County's 9-1-1 system. This system allows Security and Safety to summon assistance from emergency responders when necessary. This direct radio link with the Bucks County Communications Center also affords the Office of Security & Safety the ability to communicate directly with responding police, fire and EMS personnel. All phone lines routed to Security and Safety are answered 24 hours-a-day by professionally trained Security personnel.

The Office of Security & Safety works closely with the College's Office of Student Life and the Physical Plant department to ensure a safe environment. The Newtown Township Police Department, Bristol Township Police Department, Pennridge Regional Police Department, State Park Service, as well as local fire departments and ambulance corps are also available to support the mission of the Office of Security and Safety.

Located throughout the Newtown campus are 15 well-marked, blue light emergency phones. These emergency phones may be used when seeking an escort, requesting an evening shuttle transport, parking lot assistance and/or reporting suspicious activities or criminal activity. Security personnel proactively inspect the phones on a regular basis to ensure that they are operative. However, if a member of the campus community finds any of these phones inoperative, they should contact the Office in order that the phone be repaired or replaced as quickly as possible. Surveillance video cameras deployed at all three campuses assist in maintaining a safe environment. Expansion of security camera coverage continues with new systems installed at the Upper and Lower Bucks Campuses. At the Newtown Campus additional cameras have been installed in the Gateway, Rollins, Gym, Cafeteria and Cottage areas.



*Emergency call boxes are strategically located around the Newtown Campus*

### **CAMPUS ENFORCEMENT AUTHORITY:**

Students and employees are encouraged to promptly report all on-campus crime and suspicious activities to the Office of Security & Safety. When incidents occur off campus, students and employees are encouraged to contact the local police department with jurisdiction. It should be noted that Security & Safety officers have no arrest authority beyond that of an ordinary citizen; however, they may receive reports of offenses and refer them to the local police or campus judicial officials. Security personnel also perform follow-up investigations when appropriate. The Office maintains excellent working relationships with the Newtown Township Police Department, Bristol Township Police Department, Pennridge Regional Police Department and the State Park Service. In 2010 the

College agreed upon memoranda of understanding (MOU) with the three police agencies which have primary jurisdiction over our campuses. The College and the Office of Security & Safety diligently cooperate with law enforcement agencies to maximize the effectiveness of local police services to the campus community. The Dean of Students coordinates disciplinary action for matters that are violations of the College Code of Conduct.

### COMMUNITY COMPLAINTS/FEEDBACK:



The Office of Security & Safety encourages community members to bring forward legitimate grievances regarding misconduct by its employees. Any member of the Office of Security & Safety will receive such complaints courteously. All such complaints will be taken seriously and investigated thoroughly by the Director and/or Assistant Director of Security and Safety.

### ALCOHOL POLICY:

The College supports the choice not to drink alcoholic beverages and actively discourages and sanctions the irresponsible use of alcohol. In compliance with Pennsylvania laws and the Drug Free Schools and Communities Act, the College does not condone the consumption of alcoholic beverages by students (or their guests) on the campus. The College will establish reasonable procedures to assure that students are aware of their legal obligations in this regard. Inappropriate behavior involving the furnishing or consumption of alcoholic beverages will result in appropriate disciplinary proceedings and penalties. The College recognizes and cooperates with law enforcement authorities in their enforcement efforts pertaining to the illegal consumption or possession of alcoholic beverages, and will seek to educate students about laws pertaining to the use, consumption, possession, and abuse of alcoholic beverages.

### CONTROLLED SUBSTANCE POLICY:

Illegal possession, manufacture, distribution, or use of drugs or narcotics by students constitutes unacceptable conduct and such students are subject to disciplinary measures by the College. Moreover, under Pennsylvania law, those who possess a small amount of marijuana (30 grams or less) are guilty of a misdemeanor. Selling marijuana and illegally possessing or distributing any other type of drug is a felony and carries heavier penalties. The Office of Security and Safety will report drug law violations to local police.

It is the policy of Bucks County Community College to maintain a drug-free workplace. Illegal possession, use, manufacture, or distribution of drugs or narcotics by employees (while engaged in employment activities or activities related to a federal grant, regardless of the location of these activities) constitutes unacceptable conduct and makes such employees subject to disciplinary procedures of the College, up to and including termination.

The purpose of this summary is to provide students and employees of the College with general information on applicable laws. Although every effort has been made to provide accurate information at the time of printing, this information can at any time be superseded by changes in the law. Each student and employee has the ultimate responsibility to stay informed concerning changes in the law. Those with specific legal questions are encouraged to consult with an attorney.

### ALCOHOL AND DRUG ABUSE EDUCATION PROGRAMS:

**Alcohol/Drug Related Support Services** - Bucks County Community College's Counseling Services has a staff of counselors who are available to students in crisis as well as for ongoing counseling, assessment and referral. All counseling services are strictly confidential. Students may refer themselves or be referred by the Office of Student Life following an alcohol or drug-related incident. They may also be referred by concerned faculty or administrators. Our staff assists the student by recommending off-campus assessment/treatment providers from which the student may choose.

### SEXUAL ASSAULT PREVENTION PROGRAMMING AND PROCEDURES:

A variety of programs offered by the Counseling Center, the Office of Security and Safety, and the Student Life Office deal with various aspects of sexual assault. For example, the Office of Security & Safety has two members certified as instructors of the Rape Aggression Defense system (R.A.D.). The Office of Security & Safety partners with the Student Government Association to make this valuable training available to the women of the campus community.

Bucks County Community College will act swiftly to protect the rights of all its members. Women who have been sexually assaulted have a variety of campus and area resources that are available to them. The College supports the victim's right to choose which avenues of assistance are most appropriate. These resources include: The Office of Security and Safety, to whom all crimes (including sexual assaults) should be reported, the Student Life office, the Counseling Center, the Dean of Students, the local police



*A sample of the printed safety information available to students*

agency with jurisdiction, NOVA – Network of Victim Assistance, and the emergency department of the local hospital. Individuals who have been sexually assaulted have the following rights:

1. To be given a copy of the College's sexual assault policy.
2. An opportunity to contact local police and/or district attorney. Bucks County Community College will assist the student in notifying proper law enforcement officials, if requested.
3. Transport to the nearest medical facility approved for the collection of rape evidence.
4. Awareness of mental health counseling on campus or in the community.
5. Alternative class assignment if requested and reasonably available.



*Security Officer Brandy Strickland trains women of the campus community on sexual assault defense techniques.*

Due to the violent and extremely serious nature of sexual assault, the College strongly encourages individuals who have been sexually assaulted to contact the police. Reporting the assault to the police soon after the incident occurs may greatly increase the possibility of successful prosecution, should the victim decide to pursue criminal charges. It is extremely important to preserve all evidence of a sexual assault if criminal prosecution is to be considered.

Victims of sexual assault will be offered the opportunity to make a formal complaint through the College's judicial system against the offender, under the College's Code of Conduct. The College may pursue code of conduct charges regardless of whether any criminal charges are filed. However, the College's judicial process is not intended to serve as a substitute for the criminal justice system. The College will initiate internal judicial proceedings in incidents of sexual assault when a student requests it and/or when subsequent investigation produces substantial evidence of a violation of College policy. Students will receive a copy of the Student Policy and Procedures Handbook, which includes the College's sexual misconduct and harassment policies, as well as complete information on the College's

judicial process.

Individuals have the right to have any questions about College policy and the college judicial process answered. If an individual who reports a sexual assault is harassed by anyone in connection with the incident, the harassment should be reported immediately to the Office of Security and Safety. Reporting such harassment will enable the College to investigate the allegations. Individuals have the option to have a victim's advocate and/or any other advisor with them at all times throughout such procedures. Both the accuser and the accused shall be informed of the outcome of any institutional disciplinary proceeding brought alleging a sexual offense. This includes the College's final determination as well as any sanctions against the accused.

## **SEX OFFENDER REGISTRY AND ACCESS TO RELATED INFORMATION:**

The federal Campus Sex Crimes Prevention Act, enacted on October 28, 2000, became effective on October 28, 2002. The law requires institutions of higher education to issue a statement advising the campus community where law enforcement agency information provided by a State concerning registered sex offenders may be obtained. It also requires sex offenders already required to register in a State to provide notice, as required under State law, of each institution of higher education in that State at which the person is employed, carries on a vocation, or is a student. In the Commonwealth of Pennsylvania, information regarding registered sex offenders who are subject to community notification may be obtained from a community member's respective local municipal police agency and/or the Pennsylvania State Police. In Newtown, Bristol and Perkasio, where our three campuses are located, information regarding registered sex offenders who are subject to community notification may be obtained at the respective local police departments, at any Pennsylvania State Police barracks, or online at [www.pameganslaw.state.pa.us](http://www.pameganslaw.state.pa.us).

## **ACCESS TO CAMPUS FACILITIES:**

Most campus buildings and facilities are accessible to members of the campus community, guests and visitors during normal hours of business (Monday - Saturday). This excludes most holidays. Faculty and staff who wish to enter their office or support areas during non-duty hours are asked to notify or visit the Office of Security and Safety. Department heads are requested to submit entry authority lists to the Office of Security and Safety for personnel assigned to their respective departments with special access needs.

## **MAINTENANCE AND SECURITY OF CAMPUS FACILITIES:**

Bucks County Community College maintains a strong commitment to campus safety and security, including facility issues which may impact the safety of the campus community. Exterior lighting, for example, is an important environmental component of an effective crime prevention program. Inspections and surveys of exterior and interior campus lighting are conducted on a daily basis. While on duty, security officers routinely identify lighting problems via reports, which are forwarded to Physical Plant for repair. Lighting problems of a serious nature are reported immediately to the 24-hour maintenance person on-call.

As a part of routine patrols security officers inspect exterior doors on campus facilities to ensure that their closing and locking units are working properly. Exterior doors on all academic and administrative buildings on campus are locked and secured each evening by campus security officers. The officers also report door and security hardware deficiencies when discovered.

Parking lots and other public areas are actively patrolled by campus security. These patrols are conducted to increase visibility and act as a deterrent to would-be vandals or thieves. Security representatives conduct both scheduled facility safety audits as well as daily inspections of facilities while on patrol. These audits and inspections include all College-owned buildings, facilities, storage areas, and other areas owned or controlled by the College. Any observed discrepancies are reported to the appropriate campus departments for follow-up and correction.

## SECURITY AWARENESS AND CRIME PREVENTION PROGRAMS:



Bucks County Community College aims to prevent crimes from occurring instead of reacting to reports of crimes that have already occurred. A primary vehicle for accomplishing this goal is the Office's crime prevention program. The crime prevention program is designed to eliminate or minimize criminal opportunities that exist on campus and to create an atmosphere in which students and other community members become more aware of their own security and the security of others. Crime prevention programs offered by the Office of Security & Safety include an escort service, new student orientation briefing, personal safety programs, printed crime prevention materials, sexual assault awareness, R.A.D. training, education and prevention programs, security & facility surveys, and fire and life safety training and awareness programs. In addition, the Director and Assistant Director conduct an annual walking tour of campus with student government representatives. The Office of Security and Safety's approach to crime prevention mirrors many of the best practices associated with the community policing concept in an effort to provide campus community members with a truly professional level of public safety services.

*Crime prevention efforts such as this poster are intended to decrease student victimization.*

## MISSING/RUNAWAY PERSON(S):

If a member of the College Community has reason to believe that a student is missing, all possible efforts are made to locate the student to determine his or her state of health and well-being through the collaboration of the Office of Security and Safety and the Office of Student Life. Based upon circumstances, the Office of Security and Safety may also enlist the aid of the local police agency having jurisdiction. Concurrently, college officials will endeavor to determine the student's whereabouts through contact with friends, associates, and/or employers of the student. Whether or not the student has been attending classes and scheduled organizational or academic meetings, or appearing for scheduled work shifts will be established.

If located, verification of the student's state of health and intention of returning to the campus is made. When appropriate, a referral will be made to the Counseling Services Office and/or Student Life Office.

If not located, notification of the family within 24 hours of receiving the initial report is made to determine if they know of the whereabouts of the student. Such notification will be made by a Student Life staff member or an officer from the Office of Security and Safety. In addition, appropriate family members or associates are encouraged to make an official missing person report to the law enforcement agency with jurisdiction. The Office of Security and Safety will cooperate with and assist the primary investigative agency in its efforts to locate the missing individual. The Office of Security and Safety will open an official investigation and retain status as the primary investigative unit until relieved by the law enforcement agency with jurisdiction.

All pertinent law enforcement agencies, including those located along suspected travel corridors or place of original domicile, will be notified and requested to render assistance in the effort to locate the missing individual.

Gathering of information regarding the missing person will include, but may not be limited to: name, gender, race, date of birth, height, weight, eye color, hair color/length, date/time of last contact, photo availability, possible medicinal usage, address, phone number, S.S. #, full information of vehicle the individual may be operating, names/address/phone number(s)/description(s) of person(s) missing individual may be with.

The following criteria may trigger immediate notification to the local police Department:

1. The person reported missing has a physical or mental disability; thereby subjecting him/herself, or others to personal and/or immediate danger.
2. The person reported missing is/was in the company of another person under circumstances indicating his/her physical safety is in danger.
3. The person reported missing is missing under circumstances indicating the disappearance was not voluntary.

"Suzanne's Law" requiring local police to notify the National Crime Information Center (NCIC) when someone between 18 and 21 is reported missing was signed into law by President George W. Bush in the Spring of 2003 as part of the national "Amber Alert" Bill. The federal law is named after Suzanne Lyall, a State University of New York at Albany student who has been missing since 1998. Previously police were only required to report missing persons under the age of 18. This new law is intended to encourage

police to begin investigating immediately when college-age people disappear, instead of waiting 24 hours, which has been a common practice.

Upon closure of the missing person investigation, all parties previously contacted will be advised of the status of the case.

## **EMERGENCY RESPONSE AND EVACUATION PROCEDURES:**

In the event of a significant emergency or dangerous situation involving an immediate threat to the health or safety of those on campus, communications will be under the direction of the College President or designated Emergency Director. The College employs a variety of means for rapid notification of the campus community during an emergency, including: text message (SMS) alerts, e-mail alerts, a siren warning system, departmental phone chains and website announcements.

In such an emergency, the College will, without delay, and taking into account the safety of the community, determine the content of the notification system, unless the notification will, in the judgment of responsible authorities, compromise efforts to assist victims or to contain, respond to, or otherwise mitigate the emergency.

When confirmation of an emergency has been made by the Office of Security and Safety or by a public safety agency, the President or President's designee will declare a campus-wide emergency. The appropriate emergency notification system(s) will be determined and the notification system(s) will be activated.

The following College employees are responsible for carrying out the emergency notification process: President, Vice-President for Administrative Affairs, Dean of Student Affairs, Dean of Academic Affairs, Vice-President for Continuing Education, Dean of Learning Resources, Vice-President for Information Technology, Dean of Academic & Curricular Services, Director of Security & Safety, Assistant Director of Security & Safety, Director of I.T. Security, Director of Budget.

External communications during an emergency will be under the direction of the President or the designated Emergency Director. One official spokesperson will be designated, along with an alternate. All public and media contacts will be handled by the Public Relations Office.

The Office of Security & Safety coordinates tests of the College's emergency notification/evacuation systems at least once per calendar year. Tests include the SMS/e-mail alert systems, siren alert system, fire alarm system and website alert system. In 2010, an unannounced, campus-wide building evacuation fire drill was conducted on September 13th. The e2campus emergency alert system was tested during both the spring and fall semesters. In addition, the Office of Security & Safety is working with local police agencies at all three campuses to develop emergency drills. The Office also participates in Countywide emergency drills such as a recent mass prophylaxis exercise.



## **CAMPUS CRIME AND PREPARATION OF THE ANNUAL SECURITY REPORT:**



Bucks County Community College is committed to the accurate reporting of crimes on campus. These statistics are compiled from information contained within official Office of Security and Safety incident reports, Student Affairs reports, applicable police reports, and information received from officials of the college with significant responsibility for student activities. The College has advised all "campus security authorities," as defined by federal law, of their duty to report all crimes to the Office of Security and Safety for inclusion in the annual disclosure of crime statistics. Professional counselors, as defined by federal law, who act in such capacities, have been advised that, while they are not obligated to report crimes for the purpose of compiling these statistics, they are encouraged, when they deem it appropriate, to inform the

persons they are counseling of their ability to report any crimes on a voluntary, confidential basis for inclusion. Each year, representatives from the Office of Security and Safety, the Student Life Office, and the Human Resources Office, review the current campus security report and provide information to update and compile the crime statistics for the most recent calendar year. Changes to 20 U.S.C. 1092 (F), Section 486 (e), Disclosure of Campus Security Policy and Campus Crime Statistics have resulted in Bucks County Community College reporting crimes in three tables. Table One under Pennsylvania Statute and tables two and three under the 20 U.S.C. 1092 (f).

## **FOR ADDITIONAL INFORMATION CONTACT:**

1. Director of Security and Safety: (215) 968-8395
2. V.P. for Administration: (215) 968-8300
3. V.P. for Planning & Assessment and Dean of Student Affairs: (215) 968-8045
4. Director of Student Life: (215) 968-8257
5. Director of Human Resources: (215) 968-8090

# BUCKS COUNTY COMMUNITY COLLEGE

TABLE 1

The Pennsylvania College and University Security Information Act mandates the release of crime statistics and rates to matriculated students and employees. The index rate is based on the premise that the community consists of 100,000 people. The crime rates for 2008, 2009, and 2010 are established using population figures for the academic year 2010; approximately 10,000 total members of the community (standard rounding rules are applied).

Calendar Years	2008		2009		2010	
	ACTUAL	INDEX	ACTUAL	INDEX	ACTUAL	INDEX
<b>Part I Offenses</b>						
Murder & Non-Negligent Manslaughter	0	0.00	0	0.00	0	0
Negligent Manslaughter	0	0.00	0	0.00	0	0
Rape	0	0.00	0	0.00	0	0
Robbery	0	0.00	1	10.00	0	0
Aggravated Assault	0	0.00	0	0.00	0	0
Burglary	3	30.00	0	0.00	1	10.00
Theft - Larceny	33	330.00	38	380.00	34	340.00
Vehicle Theft	0	0.00	2	20.00	0	0
Arson	0	0.00	0	0.00	0	0
<b>TOTAL</b>	<b>36</b>	<b>360.00</b>	<b>41</b>	<b>410.00</b>	<b>35</b>	<b>350.00</b>
<b>Part II Offenses</b>						
Other Assault	1	10.00	4	40.00	3	30.00
Forgery	0	0.00	0	0.00	0	0
Counterfeiting	2	20.00	0	20.00	1	10.00
Fraud	0	0.00	0	0.00	0	0
Embezzlement	0	0.00	0	0.00	0	0
Stolen Property	0	0.00	1	10.00	0	0
Vandalism	80	800.00	36	360.00	24*	240.00
Weapons	1	10.00	0	0.00	0	0
Prostitution	0	0.00	0	0.00	0	0
Other Sex Offenses	0	0.00	0	0.00	0	0
Drug Abuse Violations	1	10.00	1	10.00	2	20.00
Gambling	0	0.00	0	0.00	0	0
Family Offenses	0	0.00	0	0.00	0	0
Driving under the Influence	0	0.00	0	0.00	0	0
Liquor Law	0	0.00	0	0.00	0	0
Drunkenness	0	0.00	1	10.00	0	0
Disorderly Conduct	7	70.00	5	50.00	16	160.00
Vagrancy	0	0.00	0	0.00	0	0
All Others	0	0.00	2	20.00	0	0
<b>TOTAL</b>	<b>92</b>	<b>920.00</b>	<b>50</b>	<b>500.00</b>	<b>46</b>	<b>460.00</b>

These statistics reflect the number of incidents reported to the Office of Security and Safety. The figures do not indicate actual criminal prosecution, student judicial action, or the results of either.

**NOTES:**

\*Two instances of vandalism at the Newtown Campus employed slurs indicating prejudice based on race and/or sexual orientation.

# BUCKS COUNTY COMMUNITY COLLEGE CRIME STATISTICS 2008 – 2010

TABLE 2

	On-Campus Newtown			On-Campus UBC-Perkasie			On-Campus LBC-Bristol			Non-Campus Property			Public Property			TOTALS		
Calendar Years	'08	'09	'10	'08	'09	'10	'08	'09	'10	'08	'09	'10	'08	'09	'10	'08	'09	'10
Murder & Non-Negligent Manslaughter	0	0	0	0	0	0	0	0	0	0	0	0	0	0	0	0	0	0
Negligent Manslaughter	0	0	0	0	0	0	0	0	0	0	0	0	0	0	0	0	0	0
Forcible Sex Offenses	0	0	0	0	0	0	0	0	0	0	0	0	0	0	0	0	0	0
Non-Forcible Sex Offenses	0	0	0	0	0	0	0	0	0	0	0	0	0	0	0	0	0	0
Robbery	0	1	0	0	0	0	0	0	0	0	0	0	0	0	0	0	1	0
Aggravated Assault	0	0	0	0	0	0	0	0	0	0	0	0	0	0	0	0	0	0
Burglary	2	0	0	1	0	1	0	0	0	0	0	0	0	0	0	3	0	1
Arson	0	0	0	0	0	0	0	0	0	0	0	0	0	0	0	0	0	0
Larceny-Theft	22	28	27	7	1	1	4	8	5	0	1	1	0	0	0	33	38	34
Motor Vehicle Theft	0	0	0	0	0	0	0	2	0	0	0	0	0	0	0	0	2	0
Liquor Violations – Arrests	0	0	0	0	0	0	0	0	0	0	0	0	0	0	0	0	0	0
Drug Related Violations – Arrests	0	0	1	0	0	0	0	0	1	0	0	0	0	0	0	0	0	2
Weapons Possession Arrests	0	0	0	0	0	0	1	0	0	0	0	0	0	0	0	1	0	0
Liquor Violations – Referrals **	0	1	0	0	0	0	0	0	0	0	0	0	0	0	0	0	1	0
Drug Related Violations-Referrals **	0	0	1	0	0	0	0	0	0	0	0	0	0	0	0	0	0	1
Weapons Possession Referrals **	0	0	0	0	0	0	0	0	0	0	0	0	0	0	0	0	0	0
Hate Crimes ***	0	0	0	0	0	0	0	0	0	0	0	0	0	0	0	0	0	0

**\*\* REFERRALS FOR CAMPUS DISCIPLINARY ACTION:**

Effective since 1999, in addition to arrests, the Clery Act requires the disclosure of persons referred for campus disciplinary action for liquor law violations, drug-related violations, and weapons possession. Because of the seriousness with which Bucks County Community College treats such offenses, all persons considered to be in violation of liquor or drug laws or applicable College policies are referred to the Judicial Affairs Office for disciplinary action, ranging from a written warning to expulsion. It should be noted that referrals may consist of a group of two or more students being referred for discipline for a single incident.

\*\*\* Number of reported crimes listed above or other crimes involving bodily injury to any person that manifested evidence that the victim(s) were intentionally selected because of their actual or perceived race, gender, religion, sexual orientation, ethnicity, or disability.

# Bucks County Community College Race, Gender, and Religion Based Incidents

TABLE 3

Crime	2010 Total	Race	Gender	Religion	Sexual Orientation	Ethnicity	Disability
Murder	0	0	0	0	0	0	0
Manslaughter	0	0	0	0	0	0	0
Sex offenses:	0	0	0	0	0	0	0
Forcible	0	0	0	0	0	0	0
Non-forcible	0	0	0	0	0	0	0
Robbery	0	0	0	0	0	0	0
Aggravated Assault	0	0	0	0	0	0	0
Burglary	0	0	0	0	0	0	0
Motor Vehicle theft	0	0	0	0	0	0	0
Arson	0	0	0	0	0	0	0
Other crimes involving Bodily Injury	0	0	0	0	0	0	0
Other crimes with no Bodily Injury	2*	2	0	0	1	0	0

*\*two total incidents, one of which employed multiple slurs.*

Crime Statistics recorded in compliance with the Jeanne Cleary Disclosure of Campus Security Policy & Campus Crime Statistics Act, Section 485 (f) (20 U.S.C. 1092 (f) as amended 1998 and the State Board of Education, College, and University Security Information Act (Act 73 of 1988).

The Annual Security Report is prepared in accordance with 20 U.S.C. 1092 (f) (7), Section 485 (f), Campus Security Policy and Campus crime statistics as amended and Pennsylvania Law 448, No. 73 as amended.

## Federal Bureau of Investigation Uniform Crime Reporting/National Incident-Based Reporting System Crime Definitions

Excerpted from the Implementing Regulations of the "Jeanne Cleary Disclosure of Campus Security Policy and Campus Crime Statistics Act" (originally the Campus Security Act) originally published in the Federal Register on April 29, 1994 (Vol. 59, No. 82) and November 1, 1999 (Vol 64, No. 210).

The following definitions are to be used for reporting the crimes listed in 34 CFR sec. 668.46 (previously 668.47) in accordance with the Federal Bureau of Investigation's Uniform Crime Reporting Program. The definitions for murder, robbery, aggravated assault, burglary, motor vehicle theft, weapon law violations, drug abuse violations and liquor law violations are excerpted from the Uniform Crime Reporting Handbook. The definitions of forcible and nonforcible sex offenses are excerpted from the National Incident-Based Reporting System Edition of the Uniform Crime Reporting Handbook.

### Crime Definitions From the Uniform Crime Reporting Handbook:

**Arson** - Any willful or malicious burning or attempt to burn, with or without intent to defraud, a dwelling house, public building, motor vehicle or aircraft, personal property of another, etc.

**Criminal Homicide-Manslaughter by Negligence** - The killing of another person through gross negligence.

**Criminal Homicide-Murder and Nonnegligent Manslaughter** - The willful (nonnegligent) killing of one human being by another.

**Robbery** - The taking or attempting to take anything of value from the care, custody, or control of a person or persons by force or threat of force or violence and/or by putting the victim in fear.

**Aggravated Assault** - An unlawful attack by one person upon another for the purpose of inflicting severe or aggravated bodily injury. This type of assault usually is accompanied by the use of a weapon or by means likely to produce death or great bodily harm. (It is not

necessary that injury result from an aggravated assault when a gun, knife, or other weapon is used which could and probably would result in serious personal injury if the crime were successfully completed.)

**Burglary** - The unlawful entry of a structure to commit a felony or a theft. For reporting purposes this definition includes: unlawful entry with intent to commit a larceny or felony; breaking and entering with intent to commit a larceny; housebreaking; safecracking; and all attempts to commit any of the aforementioned.

**Motor Vehicle Theft** - The theft or attempted theft of a motor vehicle. (Classify as motor vehicle theft all cases where automobiles are taken by persons not having lawful access even though the vehicles are later abandoned including joyriding.)

**Weapon Law Violations** - The violation of laws or ordinances dealing with weapon offenses, regulatory in nature, such as: manufacture, sale, or possession of deadly weapons; carrying deadly weapons, concealed or openly; furnishing deadly weapons to minors; aliens possessing deadly weapons; and all attempts to commit any of the aforementioned.

**Drug Abuse Violations** - Violations of State and local laws relating to the unlawful possession, sale, use, growing, manufacturing, and making of narcotic drugs. The relevant substances include: opium or cocaine and their derivatives (morphine, heroin, codeine); marijuana; synthetic narcotics (Demerol, methadone's); and dangerous nonnarcotic drugs (barbiturates, Benzedrine).

**Liquor Law Violations** - The violation of laws or ordinances prohibiting: the manufacture, sale, transporting, furnishing, possessing of intoxicating liquor; maintaining unlawful drinking places; bootlegging; operating a still; furnishing liquor to a minor or intemperate person; using a vehicle for illegal transportation of liquor; drinking on a train or public conveyance; and all attempts to commit any of the aforementioned. (Drunkenness and driving under the influence are not included in this definition.)

### **Sex Offenses Definitions From the National Incident-Based Reporting System Edition of the Uniform Crime Reporting Program:**

**Sex Offenses-Forcible** - Any sexual act directed against another person, forcibly and/or against that person's will; or not forcibly or against the person's will where the victim is incapable of giving consent.

**A. Forcible Rape**-The carnal knowledge of a person, forcibly and/or against that person's will; or not forcibly or against the person's will where the victim is incapable of giving consent because of his/her temporary or permanent mental or physical incapacity (or because of his/her youth).

**B. Forcible Sodomy**-Oral or anal sexual intercourse with another person, forcibly and/or against that person's will; or not forcibly against the person's will where the victim is incapable of giving consent because of his/her youth or because of his/her temporary or permanent mental or physical incapacity.

**C. Sexual Assault With An Object**-The use of an object or instrument to unlawfully penetrate, however slightly, the genital or anal opening of the body of another person, forcibly and/or against that person's will; or not forcibly or against the person's will where the victim is incapable of giving consent because of his/her youth or because of his/her temporary or permanent mental or physical incapacity.

**D. Forcible Fondling**-The touching of the private body parts of another person for the purpose of sexual gratification, forcibly and/or against that person's will; or, not forcibly or against the person's will where the victim is incapable of giving consent because of his/her youth or because of his/her temporary or permanent mental incapacity.

### **Sex Offenses-Nonforcible:**

#### **Unlawful, nonforcible sexual intercourse.**

**A. Incest**-Nonforcible sexual intercourse between persons who are related to each other within the degrees wherein marriage is prohibited by law.

**B. Statutory Rape**-Nonforcible sexual intercourse with a person who is under the statutory age of consent.

Source: Federal Register, April 29, 1994, Vol. 59, No. 82; Federal Register, November 1, 1999, Vol. 64, No. 210.

This information is provided as a part of Bucks County Community College's continuing commitment to safety and security on campus in compliance with the College and University Security Information Act of Pennsylvania and the Jeanne Clery Disclosure of Campus Security Policy and Campus Crime Statistics Act. Concerns, questions, or complaints related to this document or the applicable statutes should be directed to the Director of Security and Safety either by mail at Bucks County Community College 275 Swamp Rd. Newtown, PA 18940, or by telephone at (215) 968-8394.