



Dear Friends:

Thank you for your support and continued loyalty to Bucks County Community College. Please take a few minutes to read about fellow donors, and our students, faculty and staff. In addition, take in the facts and figures and see the impact gifts of any size can have at your community college.

The 2010 Annual Report shows you the progress we made, both as a College and as a Foundation, illustrated by our "Year in Review." One of the other things you will check for is your name in the appropriate giving circle to be sure it is correct. If we made a mistake, please let us know. And if your name isn't listed, consider making a gift before December 31, so your participation will be recognized in the 2011 report.

Through this annual report, we want to show how you have helped to shape the College's past and the importance for staying committed to its future. Thank you again for your investment in higher education.

Sincerely,

Tobias Bruhn, CFRE
Executive Director

P.S. To make a gift to Bucks County Community College, use the envelope contained in this report, visit www.bucks.edu/foundation, e-mail foundation@bucks.edu, or call 215-968-8224.

Follow us on



@BCCCFoundation



Making a Difference

Various opportunities are available to make a contribution to Bucks County Community College, including:

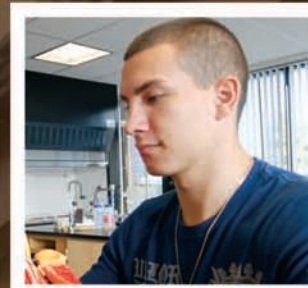
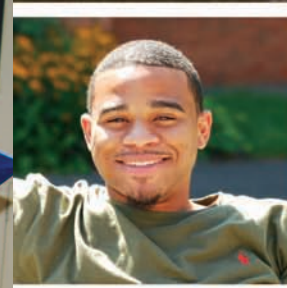
- Cash
- Bequests
- Annuities
- Naming & Scholarship Opportunities
- Securities
- Pledges
- Life Insurance

For more information on how you can support Bucks County Community College contact:

Bucks County Community College Foundation
Tyler Hall • 275 Swamp Road • Newtown, PA 18940
Tel: 215-968-8224 • Fax: 215-968-8245 • foundation@bucks.edu

To make a pledge online or obtain information about upcoming events, visit www.bucks.edu/foundation.

A copy of the official registration and financial information for the Bucks County Community College Foundation may be obtained from the Pennsylvania Department of State by calling toll free, within Pennsylvania, 1-800-732-0999.



Making a Difference

2010 Annual Report
January 1–December 31





In 2010, the Bucks County Community College Foundation continued its quest to advance the College as a community of excellence by increasing overall giving by 6.7 percent thanks to our alumni and community friends.

The work of Bucks and its Foundation touches thousands of lives each day. The financial gifts entrusted to us by our donors enabled us to continue to maintain our state-of-the-art campuses, and to enhance the experience of our students through scholarships and the purchase of classroom resources.

This annual report demonstrates the power of private support and is our opportunity to thank you and recognize your contributions. Despite the challenging economy, the year was filled with memorable moments. The Upper Bucks Campus opened the doors to its \$15 million LEED certified expansion project, while hundreds of students were recognized during our annual scholarship ceremony for their academic achievements.

With your continued support, we will meet future challenges and further enhance the College's community of excellence. Without gifts from the greater community, Bucks would be limited in what it can provide for its students. On behalf of the Foundation Board of Directors, thank you for generously contributing your time and finances to advance our community college.

Sincerely,

Raymond 'Skip' Goodnoe
President, Board of Directors
Bucks County Community College Foundation



Student success at Bucks County Community College has always been our first priority. Ensuring that success is a collaborative effort of the College's faculty and staff, our county and state sponsors, and all those beyond the campus community who contribute to scholarships, provide enhancements in teaching and learning technology, or sponsor physical facilities. All of these combine to form a community of supporters who project the institution forward and provide for the next generation of learners.

The leadership of the Foundation Board of Directors is central to continuing the mission of raising funds to support students and the teaching excellence that has been a hallmark of the College since its inception. Our lasting thanks are due to these stalwart members of our community, and many others who serve on special task teams, who volunteer for this effort.

On behalf of the entire College community, and particularly our students, I extend continued thanks and recognition for the efforts and generosity of many who have made the commitment to make Bucks an ever better place to learn. Our entire community is the better for these efforts. Thank you.

James J. Links
President, Bucks County Community College

THE YEAR IN REVIEW

JANUARY



Dedicated plaque at the Lower Bucks Campus in recognition of First Federal of Bucks County's long-standing commitment to the institution. College President Dr. James J. Links (right) thanked First Federal's President Bruce Iacobucci (left) for helping the College fulfill its promise to the Lower Bucks County community. "The bank has been a strong supporter of our students, and an advocate for the community college's mission," Links said.

FEBRUARY

More than 80 local business and community leaders attended the second annual Bucks Presidents' VIP Breakfast at the historic Tyler mansion to learn more about the community college's enrollment and budget situation, as well as future expansion plans.



MARCH

Frank Eckert '73 bequeathed \$15,000 to the College's Library Endowment Fund. During his life, the Bucks County resident passionately supported BCCC's Library in its quest to provide the latest resources to students.



APRIL

Ribbon cutting ceremony for the Upper Bucks Campus expansion. The \$15 million "green" construction project added a library, café, student commons, classrooms, and outdoor amphitheater in a 28,000-square-foot addition.



MAY



The annual Honors Convocation ceremony saw nearly 200 students being recognized for their academic achievements, receiving more than \$185,000 in scholarships.

JUNE & JULY

The annual Tyler Tasting Party raised more than \$53,000 for student scholarships and the restoration of historic Tyler Hall, the French-Norman style mansion and cornerstone of the College's Newtown Campus. The premier event attracted nearly 500 people who sampled food, wine and fine spirits from 40 area establishments.



AUGUST

122 golfers took to the links at the 16th annual Golf Classic at Manufacturers' Golf & Country Club. The event raised \$41,000 for student scholarships and priority projects not funded through traditional sources. Special guest Merrill Reese, voice of the Philadelphia Eagles, entertained golfers with a preview of the NFL season.



SEPTEMBER

The Lower Bucks Campus hosted the "Show Some heART" exhibition, reception, and fundraiser. This event, co-sponsored by the Grundy Foundation, featured the Artists of Bristol and Yardley and raised \$600 for student scholarships. In addition, the Foundation hosted a special benefactor reception prior to the event to recognize contributors to the Lower Bucks Campus capital campaign. Select donors were featured on the Lower Bucks Chamber's *Outlook* magazine cover.



OCTOBER

Unveiled new donor recognition wall at Lower Bucks Campus in Bristol, Pa.



NOVEMBER

Hot tea and hot topics were the order of the day at the third annual Women's Scholarship Tea. More than 80 people attended the fundraiser in historic Tyler Hall on BCCC's Newtown Campus, raising \$6,600 for the "Salute to Mothers" scholarship.



DECEMBER



The Tyler Formal Gardens won first place in the community garden category of the Central Bucks Chamber of Commerce's annual "Bucks Beautiful" contest. The award recognized the meticulous care that has maintained the four terraces behind Tyler Hall.

Board of Directors

Raymond 'Skip' Goodnoe
President
Philip W. Wursta
Vice President
David M. Harris
Treasurer

Brett A. Diakon '99
Assistant Treasurer
Thomas P. Callahan, Esq.
Secretary
George F. Komelasky
Past President

Charles E. Barrett
Charles Bender, Esq.
William C. Brady
Dr. John P. Cherkaskas Jr.
Constance M. Furman '91
J. Lawrence Hager
Glenn D. Hains, Esq.
Dr. D. 'Keoki' Jackson
Kenneth L. Keller

H. Paul Lewis
Robert G. Loughery
Raymond F. McHugh, Esq.
Brian M. Middleton, CLU
Ray Perisho
Joseph W. Pizzo, Esq.
Eric P. Schaffhausen
Frederick E. Schea
Edward A. Wilusz

Ex-Officio

Tobias Bruhn, CFRE
*Executive Director, BCCC
Foundation*

John Strauss
*President, BCCC
Federation of Teachers*

Dr. James J. Linksz
President, BCCC

Garney Morris
*Liaison, BCCC
Board of Trustees*

Honorary Board Members

Paul Wieand
Past President
David R. Johnson
Past President
Richard D. Jones
Past President

J. Peter Dominick
Past President
John E. Long, Jr.*
Past President
Patricia K. Poprik
Past President

Mark E. Goldberg, Esq.*
Past President
David A. Chellel
Past President

Faith Bertolet*
Joseph V. DiGirolamo
Gene W. Fickes
Dr. Charles E. Rollins
Clark L. Shuster
Carol Tyler

Directors Emeriti

Robert Allahand
Lynda Barnes
Nelson Bender
Stephen Bessler
Rea Boylan, Esq.
Francis B.J. Branagan, Sr.
Dr. Frederick Breitenfeld, Jr.
Marjorie Brody
Whitney R. Chandor
Patricia Cook
Maxine M. Denker
Pasquale T. Deon, Sr.
Constance A. Eastburn
William H. Eastburn III, Esq.
Mary C. Eberle
Katherine Kelton Fabian
Barbara Farmer
Peter Farmer
Mary Fawkes
Christine Fluehr
Dr. Ruth E. Frank
Steve Frey

Albert A. Giagnacova
Christopher J. Giglotti
Steven D. Gilmore
Blaine Greenfield
Otto Grupp III
John D. Harding
Lawrence T. Harvey '67
Steve Hazzard
Ruth Hazzard
John D. Hess
Jane V. Hess*
Peter B. Heyler
Barbara Howard*
John E. Karpac
William Kelly
Dr. Stanton C. Kelton*
Madeline Kemper
John Knoell
Arlene Krause
Dale Larson
Catherine Lucisano
Charles Lucisano

John F. Matczak
Joan McKinney
George Minor
Dr. William Mlkvy
William Moyer
David Particelli
Nelson G. Pfundt
Patricia D. Pfundt*
Todd R. Pratt
Edgar N. Putman*
Kevin S. Putman
Dan Rattigan
Joan L. Richmond
William Richmond*
Donald C. Rizer, Jr.
Edward Ross
Louise Samuel
Ralph Samuel
Rita Cummins Sappenfield
Mary Lou Schaffer
Ann Silverman
Dottie Simpson

Thomas Skiffington
Linda M. Soltis '83
Deborah Spiropoulos
Thomas Sposito
Zane R. Stauffer
George Stockburger V
Michael J. Stumpf
Daniel C. Taylor
William E. Vincent
Jan Vislosky
Carl N. Wallnau, Jr.
Jill A. Wasserman*
Linda Wieand
William J. Williams
Thomas Zeuner
Eileen T. Zolotorofe '98
Charlotte A. Zuschlag

*deceased

Trustees

J. Peter Dominick
Chair

Blake H. Eisenhart
Vice Chair

James M. Dancy, Jr.
Secretary

Thomas Skiffington
Assistant Secretary
Elizabeth A. Graver
Executive Committee

Dr. Frederick Breitenfeld, Jr.
S. Willis Calkins
Frank J. Fazzalore
Carol Mignoni Ferguson
Frederick R. Gudknecht

Otto Grupp III
Madeline Kemper
Elizabeth Fineburg
Garney Morris
Bernie T. O'Neill

Authority

Edward F. Murphy, Esq.
Chair

Sheila Bass
Vice Chair

John S. Thorne, Jr.
Secretary

David Shafter
Treasurer

Patrick W. Cleary
*Assistant Secretary/
Assistant Treasurer*

Staff

Tobias Bruhn, CFRE
Executive Director

Gail Acosta
Development Manager

Adrienne Clark
*Coordinator, Foundation
and Alumni Development*

Debbie Blough
Administrative Assistant

Jean Holmes
*Database/Scholarship
Support*

We are very appreciative and grateful to our many volunteers who support the Foundation through their efforts on various committees: Golf Classic, Planned Giving Advisory Council, Women's Scholarship Tea, Tyler Restoration, and Tyler Tasting Party. In 2010, Foundation volunteers contributed 470 hours of their time.



Donor Spotlight

Bucks County Foundation

The Bucks County Foundation was started as a community trust in 1979, by a few civic minded individuals, who wanted to promote permanent philanthropy to benefit life in Bucks County. The Foundation now offers scholarships, makes grants to non-profit agencies serving the area, and manages education funds, agency endowments, and donor advised funds. It operates under a volunteer board of directors, who represent all areas of Bucks County. Bucks County Community College (BCCC) is represented by Trustee Dr. Frederick Breitenfeld.

The Foundation has grown to over \$10 million in assets and 26 funds. Gladys Happ established the very first fund, supporting students who reside in the Central Bucks School District and who choose to attend BCCC or Delaware Valley College. The first Happ-Grover Scholarships were awarded in 1983; since then the Foundation has given nearly \$900,000 to each of the two schools and provided scholarships to over 1,400 students.

In recognition of this generous support, BCCC recently named a lecture hall in honor of the Foundation. Grace M. Deon, President of the Foundation Board, praised the wonderful education offered at BCCC, saying “Education is the future; our Foundation has always believed that education is a top priority for philanthropy.” The Foundation’s Executive Director Linda Goodwin added, “We are so pleased to partner with BCCC. Bucks is affordable, and a great opportunity for youth and adults living here. This school is able to provide a lot of education with the funds we provide.”

In addition to supporting scholarships for almost every school district, the Foundation gives grants to support a long list of local non-profit agencies. “We have a commitment to all fields that benefit the county,” said Goodwin. More than 40 organizations have received grants in the past, and more are added annually. For more information about BCCC’s important community partner, visit www.buckscountyfoundation.org.

Written by Ammarie Ely, a Bucks journalism student. Ammarie took journalism and graphic design classes at Bucks and worked for the College’s student newspaper, The Centurion. She finished taking classes at Bucks in the fall 2010 semester.



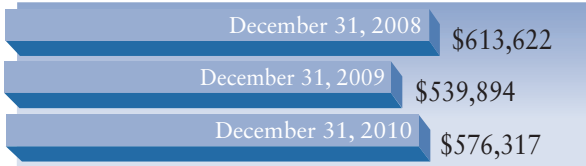
BCCC President Dr. James J. Linksz (right) and BCCC Foundation Executive Director Tobias Bruhn (left) presented the dedication plaque to Lawrence Grim, Esq., Founder of the Bucks County Foundation, President of the Foundation’s Distribution Committee Grace Deon, Esq., and its Executive Director, Linda Goodwin (from right to left).

Financials

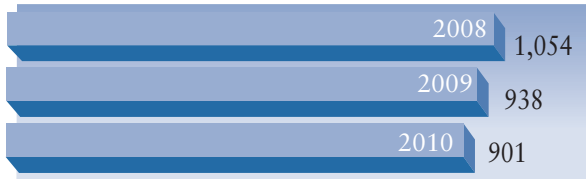
Total Net Assets Growth of 3.2%



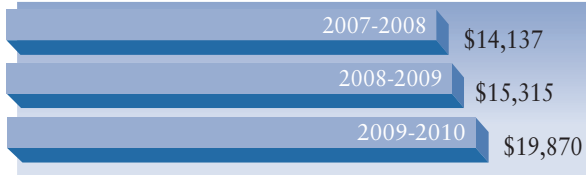
Total Donations Growth of 6.7%



Total Donors Decline of 3.9%



Annual Fund Growth of 29.7%



Total "In-Kind" Donations



Visit bucks.edu/foundation or e-mail foundation@bucks.edu for a copy of the BCCC Foundation's most recent audited financial statements.

2010 Bucks Honor Roll

Named Endowments and Scholarships *(Scholarships established in 2010 are listed in blue)*

A
 A. Marion Manning Memorial Scholarship
 Altuglas International/Arkema Community Scholarship
 Alumni Association Completion Scholarship
 Amanda Sancataldo Scholarship
 American Federation of Teacher Local #2238 – Golden Apple Award
 Andrew L. Warren Legacy Scholarship
 Anita Parente Scholarship
 Anna Marie Guthrie '76 Nursing Scholarship
 Annette L. Conn Legacy Scholarship
 Arthur E. Landy Legacy Scholarship
 Aunt Mary McGoldrick Nursing Scholarship

B
 Barbara A. Miller Legacy Scholarship
 Barbara Mudrick Ungrad Legacy Scholarship
 Barbara Richard Long Memorial Scholarship
 Barbara W. Wishnow Legacy Scholarship
 Beverly Foss Stoughton Legacy Scholarship
 Billy Greenwood Memorial Scholarship for MCSE Certification
 Brandon Awards
 Brian Seibert Memorial Scholarship
 “Bridges to Higher Education” Scholarship
 Bucks County Community College Foundation Director’s Endowment Fund


Bucks County Council for Individuals with Disabilities Scholarship

C
 Catherine McElroy Business Studies Legacy Scholarship
 CCC Celt Association/ Bernard W. Croke Scholarship
 Charles and Audrey Rollins Student Athlete Scholarship
 Charles P. Smith Legacy Scholarship
 Charles W. Beem Phi Theta Kappa Scholarship
 Christopher I. Bursk Legacy Scholarship
 Classified Employees' Outstanding Student Worker Award
 Classified Employees' Technology Support Fee Fund
 Computer & Information Science Faculty Award
 Council Rock Graduate MAST Scholarship
 Course Technology Scholarship

D
 Deborah E. Dougherty Memorial Scholarship Endowment
 Denise A. Bucon Memorial Scholarship
 Detective Charles C. Favoroso Memorial Scholarship
 Det. Sgt. George F. Stuckey Memorial Scholarship
 Dick Dougherty Legacy Scholarship
 disABILITY Services Request for Support Fund
 Donna O’Keefe Legacy Scholarship

Alison Hughes ‘11 plans to become a high school history teacher after graduating from Bucks and transferring to West Chester University. She received the George F. Tyler III scholarship and is a member of the Phi Theta Kappa honor society.

“Bucks has not only met my expectations, it exceeded them beyond belief. The beautiful campus and smaller classes made me feel right at home, while the easy commute and the ability to personalize my own schedule allowed me to continue working part-time. However, above any of these conveniences, the passionate faculty is what has been most valuable.”



Dr. Charles Hardy Legacy Scholarship
 Dr. James J. Linksz Presidential Scholarship
 Dr. John B. Smith Memorial Scholarship
 Dr. Ruth Frank Legacy Scholarship
 Dylong-Beader Art & Music Scholarship
 Dylong-Beader Journalism Scholarship

E
 Edge Product Development Graphic Design Scholarship
 Edward J. Birch Legacy Scholarship
 Eleanor Rose Daubert Endowment Scholarship
 Elizabeth V. Winpenny Nursing Scholarship
 Eugene and Saxon Bargeron Legacy Scholarship
 Express Employment Professionals Scholarship

F
 Fellowship Foundation Scholarship
 First Federal of Bucks County-David M. Harris Honorary Scholarship

First Federal of Bucks County-George W. Shaffer Memorial Scholarship
 First Federal of Bucks County-Harold F. Oswald, Jr. Honorary Scholarship
 Forbes-Stuart Social Science Award
 Foundations Community Partnership Scholarship
 Frances A. Carson Endowment Scholarship
 Frances Butler Legacy Scholarship
 Fresh Start Scholarship

G
 Gene Ferri Legacy Scholarship
 Gene Rosenberger Legacy Scholarship
 Gene W. Fickes Art Scholarship
 Gene W. Fickes Legacy Scholarship
 George F. Tyler, III Scholarship
 Gibb Foundation GED Scholarship
 Grainger Scholarship
 The Grand View Bucks-Montgomery Health Careers Scholarship

Jerry Millevoi '78 has been providing location photography in challenging environments to an extensive array of clients for more than two decades. He credits Bucks for igniting his career path before he continued on to earn a bachelor's degree from The College of New Jersey and a master's degree from West Chester University.



"My decision to enter a creative field was largely inspired by the academic freedom to explore a variety of classes offered by Bucks County Community College."

Gregory A. McClendon
Legacy Scholarship
Gwenda Mary Twiford
Memorial Scholarship

John Michael Rodak
Scholarship
Jo Soares
Legacy Scholarship

H
Happ-Grover Fund of the
Bucks County Foundation
Harry Capriotti
Legacy Scholarship
Harry W. Fawkes
Scholarship
Hope Cunningham
Legacy Scholarship

K
Karen I. Beem
Memorial Scholarship
Karen L. Dawkins
Legacy Scholarship
Katherine Sell Memorial
Education Studies
Legacy Scholarship
Kevin Zlock Veterans
Family Endowment

I
Ida LaSalle
Legacy Scholarship
Independence Foundation
Nursing Scholarship
Intelligencer / Courier
Times Journalism
Scholarship

Kids on Campus
Scholarship
Kraft Scholarship
Krista Kelly
Memorial Fund

J
James D. Geddes
Legacy Scholarship
James J. Links
Legacy Scholarship
Jim and Lucy Lynch
Legacy Scholarship
Joan F. Burkett
Legacy Scholarship
Joan Weiss
Legacy Scholarship
John Bradley Honorary
Legacy Scholarship

L
Lady Gray Memorial
Legacy Scholarship
Leah Chavis
Memorial Scholarship
Leeta Phillips Taylor
Legacy Scholarship
"Let's Celebrate
Fatherhood" Award
Lindback Distinguished
Teaching Award
Lisa K. Walton
Memorial Scholarship
Lloyd E. Penland
Scholarship in the
Humanities
Louis C. Catalanotti
Scholarship
Lyle L. Rosenberger
Historic Preservation
Scholarship

John E. Long, Jr.
Memorial Scholarship
John E. Schweizer
Legacy Scholarship

M
Mackenzie Foundation
Scholarship
Marie Mackell
Memorial Scholarship
Marjorie Brody
Scholarship Fund
Marian Ebert-Wolle
Scholarship
Martin P. Sutton
Legacy Scholarship
Martin P. Sutton
Scholarship Endowment
Marvin Ellis
Legacy Scholarship
Matthew W. Stuski
Student Artist Prize
Mirca Liberti Scholarship
Morris J. Davidson
Memorial Business
Scholarship

N
Neuber Endowment
for the Advancement of
Physically Disabled Bucks
County Residents
Northampton Township
Historical Society
Legacy Scholarship

P
PECO Scholarship
Endowment
Philip Tuniman Scholarship
Pickering Manor Licensed
Practical Nursing
Scholarship

R
Ralph Watson
Legacy Scholarship
Ray Reilly Memorial
Legacy Scholarship
Reedman Family
Business Scholarship
Reedman Family
Nursing Scholarship
Regina Hickey
Nursing Scholarship
Robert Fraser Memorial
Legacy Scholarship
Roland Johnson
Book Scholarship

Ron Goldstein
Book Scholarship
Ruth H. Goldsmith
Scholarship

S
"Salute to Mothers"
Scholarship
Sarah Mildred Watkins
Scholarship
Shirley Weese
Memorial Scholarship
SmartStart Educational
Incentive Scholarship
Sons of Italy Endowment
for Italian Language and
Culinary Arts
Steinway Award
Stella Elkins Tyler Art and
Music Scholarship
Susie Lyle Memorial
Nursing Scholarship

T
Temple University School
of Nursing Alumni
Association Scholarship
Thomas Cunningham
Legacy Scholarship

W
W. Scott Yerkes Memorial
Endowment Fund
Wachovia Scholars
Warren Horrocks
Legacy Scholarship
Warwick Foundation
Scholarship
William F. Ford
Legacy Scholarship
William F. Schurmann
Scholarship

Y
Young Artists Scholarship
Competition
Youth Orchestra of Bucks
County Music Scholarship

2010 Bucks Honor Roll

Alumni, Friends, Community Partners

The Bucks County Community College Foundation gratefully acknowledges the generosity and continued support of its alumni, friends, and community partners. The dedication of the following individuals and organizations enable the College to enhance the educational experience for its students, faculty and staff, and advance the College's mission and programs. The donors listed made gifts to Bucks County Community College between January 1 and December 31, 2010. In-kind donations from individuals and organizations are also reflected.

President's Circle \$25,000+

- Two tickets to the Tyler Tasting Party and a twosome at the Golf Classic
- Plus benefits listed below

Dean's Circle

\$10,000 - \$24,999

- Personalized brick on donor recognition pathway on Newtown or Lower Bucks Campus
- Plus benefits listed below

Founders Circle

\$5,000 - \$9,999

- Invitation to holiday reception in the historic Tyler mansion
- Plus benefits listed below

Gateway Circle

\$2,500 - \$4,999

- Commemorative gift
- Plus benefits listed below

Penn Circle

\$1,000 - \$2,499

- Invitation to special reception with BCCC's President
- Plus benefits listed below

Centurion Circle

\$100 - \$999

- Recognition on campus donor walls
- Plus benefits listed below

Friends Circle

\$1 - \$99

- Recognition in annual report
- Subscription to *The Gazebo* magazine
- An engaging relationship with BCCC

Tyler Legacy Society

Planned Gifts

- Custom lapel pin
- Commemorative gift
- Recognition in annual donor report and on campus donor walls
- Subscription to *The Gazebo* magazine

President's Circle \$25,000+

Bucks County Community College
Bucks County Foundation
Zlock, Kevin & Sima

Dean's Circle

\$10,000-\$24,999

Comcast Cable
Customers Bank
Eckert, Barbara J.
First Federal of Bucks County
First Savings Community Foundation
Foundations Community Partnership
Gasper Landscape Design & Construction
Grand View Hospital
PECO Energy Company
PNC Foundation
The First National Bank & Trust Company of Newtown
Waste Management, Inc.

Founders Circle

\$5,000-\$9,999

Bristol Rotary Club
Calkins, Bill
Delaware Valley Innovation Network
Dunmore Corporation

Finkbiner, Edwin
First Priority Bank
Joseph Jingoli & Son, Inc.
McCann, Linda
National Penn
Northampton Township Historical Society
Schea, Frederick E.
The McEwen Family Scholarship Fund at Modern Group, LTD
Weese, Richard H.

Gateway Circle

\$2,500-\$4,999

Ameresco Solar
Anonymous
Aqua America, Inc
Bender, Charles
Blackwell North America, Inc.
Breitenfeld, Jr., Frederick
Breuninger, Jr., Walter O.
Brudy Professional Development
Bucks County Council for Individuals with Disabilities
Bucks County Housing Authority
Charon Planning
Christian R. & Mary F. Lindback Trust
Doorley, Karen
Exxonmobil Foundation
First Niagara Bank

Gene and Marlene Epstein Humanitarian Fund
Harris Comfort
Independence Blue Cross
Jackson, D. 'Keoki'
JMR Charity Classic
Keystone Redevelopment Group, LLC
Lawrence Lexus
Links, James J.
Pennoni Associates, Inc.
Quakertown National Bank
Rosenberger, Lyle L.
Soroptimist International of Indian Rock, Inc.
Value Management, Inc.

Penn Circle

\$1,000-\$2,499

AECOM
Aetna Insurance Company
AMJ Foundation
BCCC Classified Employees Committee
BCCC Department of the Arts
BCCC Federation of Teachers
Beem, Charles W.
Brian Middleton & Associates, Ltd.
Bristol Borough Police Benevolent Association
Bristol Gardens, Inc.
Bristol Township Police Benevolent Association

Bruhn, Tobias & Laura
Bucks County Bank
Bucks County Commissioners' Advisory Council for Women
Bucks County Plastic Surgery Center
C.C.C. Celt
Camp, Elizabeth
Carroll Engineering Corporation
Cesare's Restaurant
Colson and Gosweiler
Crossing Vineyards & Winery
CulinArt, Inc.
Davidson, Betty N.
Dawkins, Karen
Dell, Inc.
Diakon, Brett Andrew
Dominick, J. Peter & Kathie
E.R. Stuebner, Inc.
Edge Product Development
Fluehr IV, Joseph A.
Fox Rothschild, LLP
Fulton Bank Premier Division
Harris, David M.
Hume Hudson Furniture, Inc.
John G. Moser & Son, Inc.
Johnson & Johnson Matching Gifts Program
Just Food
Keane, Claire
Krista Kelly Memorial Fund
Mass Mutual Financial Group
McGrath Construction Inc.

Middleton, Brian M.
Ohio Casualty
Order Sons of Italy in America
Paist & Noe, Inc.
ParenteBeard LLC
Petito, John H.
Pickering Manor
PNC Bank
Remax 440 Realty, Inc.
Rollins, Charles E.
Salvatore, Lilly
Schirmer, Ernest J.
Schradergroup Architecture, LLC
Shapiro, Margaret S.
Sign & Design, Inc.
Speizle Architectural Group, Inc.
Team Capital Bank
The Barbara Richard Long
Memorial Fund
The Brian Seibert
Memorial Fund
The Grundy Foundation
The Pittsburgh Foundation
Third Federal Bank
Times Publishing Newspapers
Tyler, Carol
Univest National Bank
and Trust Co.
USA Environmental
Management, Inc.
USS Real Estate
Watkins Architect
Weideman, Carol A.
Wind, Brandon
Yetman, Barbara H.
Youth Orchestra
of Bucks County
Zolotorofe, Eileen L.

Centurion Circle **\$100-\$999**

AAUW Makefield Area Branch
Acosta, Gail
Action Karate
Alliance Bank
American Association
of Woodturners
Ann's Choice
Retirement Community
Apple, Inc.
Applebee's Neighborhood
Grill & Bar
Armour, Rick
Arrowsmith, Donald
B & R Fitness Center
Baker, Floyd E. & Gertrude
Baldacci, Karl
Baldi, Cheryl L.
Balka, Debra
Bank of America
Matching Gifts
Barrett, Charles E.
Barton, Patricia L.

Battaglia, Rick
BCCC Administrative
Employees Committee
BCCC Continuing Education
BCCC Social Science Club
BCCC Student Life
Beadling, Patricia A.
Beckert, Harriet R.
Belovol, Svetlana
Bieg, Bernard J.
Birkenshaw, Patricia R.
Blakely, Glenn
Block, Alan
Bogan, Lisa
Bornak, Mary Ellen
Bowe III, James A. & Victoria
Bowman's Tavern
Brandon, Lee
Brick Hotel
Brisbane, Linda B.
Bristol Riverside Theatre
Brown, Joan
Bryant, Carmella M.
Buckingham Valley
Vineyard & Winery
Bucks County Association
of Piano Teachers
Bucks County Wellness Centre
Bugajewski Facility Services
Burke, Joan
Bursk, Christopher I.
Bush, Lynn
Butler, Mike
Callahan, Thomas P.
Campbell Soup Foundation
Campbell, Lois H.
Capriotti, Colleen F.
Carroll's Jewelers
Carter, Karl E.
Center Stage Kitchens
Chaddsford Winery
Charcoal Steaks 'N Things
Chase, George
Christiansen, Roberta A.
Christianson, Joan T.
Clark, Adrienne
Committee of the Friends
of Charlie Martin
Committee to Elect
Joseph DiGirolamo
Commonwealth National
Golf Club
Compass Sign Company
Conn, Annette
Conner & Associates, PC
Cooper, Marie S.
Corestates Capital Advisors, LLC
Costella, Cheryl L.
Crowley III, John C.
Crown Holdings, Inc.
Crystal Springs
Cullen, Lorraine

Curry, Susan L.
Dancy, James M.
David Craig Jewelers, LTD
David Wittchel Salon & Spa
Davis, Glenn
Deitz, Matthew A.
Delany, Suzanne
Delaware Valley
Packaging Group
Dimensional Management
Corporation
Diprimio, Jennifer
Dish Catering
Doane Academy
Docarmo, Stephen N.
Dolan, Kenneth P.
Dougherty, Sharon B.
Dougherty, Timothy J.
Duffy, Andrew R.
Duggan, John
Dunleavy, James J.
Dunleavy, Pat
Eckert, Jr., Robert E.
Eckert, Richard
Eichert, Sherry
El Naggat, Leticia J.
Eldridge, Braith
Ellis-Marseglia, Diane M.
Engle, Patricia A.
Essl, Edward M.
Evans, Edith D.
Evans, Emily
Evans, Jr., Joseph M. & Carolyn
Faces Hair Design
Fazzalore, Frank J. & Mary
Fedorko, Kathleen C.
Fein, Kenneth W.
Ferdinand, Edward R.
Fernwood Hotel & Resort
Fineburg, Elizabeth White
First Savings Bank of Perkasie
Fisher-Olsen, Patricia J.
Florentino's Restaurant
Ford, Barbara A.
Ford, William F.
Fornek, Mary
Frank DeRito Mens Clothier
Frank's Union Wine Mart
Fratantaro, Stefania
Freeman, James A.
G.P. Boyle & Associates, PC
Gallagher, David W.
Gamry Instruments, Inc.
Gardner, Dana C.
Gaydos, Lara L.
Gemini Linen
Giannone, Alan J.
Giggleberry Fair
at Peddler's Village
Gilligan, James J.
Gilmore & Associates
Giordano, Gina

Goldberg, Eddie
Goldberg, Michelle D.
Goodnoe Farm Dairy Bar
Goodnoe, Raymond
Gordon, Patricia
Grace, Evelyn A.
Graham, Leanna J.
Gramer, Elizabeth A.
Gredone, Kelly
Green, Lee
Gretz Beer Company
Grim, Biehn & Thatcher
Gruehagen, Margaret S.
Grupp III, Otto & Jean
Gudknecht, Frederick R.
Guttenplan, Pattie E.B.
Haaf, Janis L.
Hager, J. Lawrence
Hains, Glenn D. & Barbara
Halpin, Nancy J.
Havana Restaurant
Haviland, Jr., Paul R.
Hawk, Donald W.
Heaslip, William
Heavy Water, Ltd.
Helf, Mary C.
Hennessy, Angela A.
Higman, Michael D.
Hill, P. Randolph
Hoey, Debra M.
Holman, Terri
Holmes, Eugenia A.
Homewood Suites
Hopely, Kathleen T.
Hornchek, David P.
Houchins, Connie
Hude, Janet A.
Huffer, Beth A.
Humphreys, James B.
Hutchinson, Doug E.
Isaac Newton's
Jakub, Sarah
James A. Michener
Art Museum
Jamie Hollander Gourmet
Food and Catering
Jennings, Thomas J.
Jerdan, David
Jirele, Laura J.
Joey G's Gourmet Deli
John E. Long Jr.
Memorial Fund
John F. Byrne Jr. & Co., LLC
Johnson, Roland
Jones, Mason R.
Jones, Richard D.
Kane, Marie R.
Kaplinski, Karen
Katkocin-Balaity, Elaine S.
Kaufmann, Marta
Kavanagh, Patricia C.
Keene, Joseph

Keller, Kenneth L.
 Kelly, Steven
 Kemper, Madeline
 Kieran McKenna Flooring, Inc.
 Kobylinski, Wayne R.
 Komelasky, George F.
 Konkel, Jean
 Kramer + Marks Architects, P.C.
 Kulman, Marcy E.
 Kumarage, Erangee
 Kunnas, Gary & Marianne
 Kush, Lynn A.
 La Nuova Vita Ristorante
 La Stalla
 Lammey & Giorgio, PA
 Lammey, Bill
 Lawrence, Eric
 Lazaro, Kari M.
 Lee, Michaelen P.
 Lehigh Valley
 Community Foundation
 Lemmo, Mark
 Lewis, H. Paul
 Lilly's Cocina Loca
 Lins, Peter & Lorraine
 Litrenta, Lawrence
 Little, George
 Logicalis, Inc.
 Long, Barbara A.
 Lovett, Terri M.
 Lower Bucks County
 Chamber of Commerce
 Lower Bucks Hospital
 Lucky Cupcake Company
 Lyle, Margaret A.
 Lynch, Lois B.
 Lynn Coffee Bean & Teas
 Macy's
 Maggio, Jeffrey
 Magliaro, William P.
 Manos, George
 Mantz, Melissa
 Manufacturers' Golf &
 Country Club
 Manzo, Anthony L.
 Marco, Mary
 Mariakis, Mike
 Marish, Jacqueline
 Marsha Brown Restaurant
 Martin, Charles L.
 Mathason, Lisa
 Mathews, John E.
 Matthews, Dennis W.
 May, Denise H.
 MBS Textbook Exchange, Inc.
 McCafferty Auto Group
 McCaffrey's Catering
 McCauley, Dennis E.
 McClendon, Gregory
 McComsey, David F. & Mary E.
 McCreadie, Maureen H.
 McElroy, Catherine C.
 McGrath, Maria
 McIlhinney, Chuck
 Mckee, Christine C.
 McKinney, Sherry
 McLaughlin, Sandra C.
 McSloy, Carol J.
 Meltzer, Gary
 Meltzer, Virginia
 Merrill Lynch & Co.
 Foundation, Inc.
 Mesure, John M.
 Metlife
 Mignoni Ferguson, Carol
 Mignoni Jewelry
 Mikulski, Carol D.
 Milhous, Rochelle R.
 Miller, Barbara
 Mintzer, Janet
 Mirsky, Jay
 MMC Matching Gifts Program
 Monument Bank
 Moore, Kathleen
 Morgan, Kathleen
 Morris, Garney
 Murphy, Elizabeth M.
 National Penn
 Nejad Gallery Importers
 of Fine Oriental Rugs
 Newtown Arts Company
 Newtown Chamber Orchestra
 Newtown Floral Company
 Newtown Hardware House, Inc.
 Newtown Jewelers
 Newtown Rental Center
 Nichols, George C.
 Noble-Burak, Deborah S.
 Northampton Valley
 Country Club
 O'Keefe, Rosemary
 On the Side, Inc.
 Optik Eyewear
 Osborne, George H.
 Ota-Ya Japanese Restaurant
 Pae, Patricia A.
 Palestina, Peter
 Parry, John T.
 Paul Hellman Foundation
 Pearson Education
 Pennsbury Family
 Medical Center
 Perisho, Ray & Mary Beth
 Peters, Linda J.
 Peterson, Donna
 Philadelphia Phillies
 Piccolo Trattoria
 PNC Bank/Newtown
 Poco's Restaurant
 Poland, Janet R.
 Ponziano, Bob
 Poprik, Patricia K.
 Pruskowski, Nancy
 Puchalski, Marilyn J.
 Puente, Janet G.
 Ramirez-Strawn, Denise
 Reed, Bill
 Reese, Merrill
 Reilly, Jr., William J.
 Reilly, Mandy
 Rhodes Newtown Flower
 and Gift
 Richard, James T.
 Richard, Susan M.
 Rickett, William
 Rieger, Jr., Albert J.
 Rivers, Elizabeth Z.
 Rogers, Tony
 Rosebank Winery
 Rosen, Robert H.
 Rowlands, Robyn
 Rufe, Cynthia M.
 Ryan, Roberta
 Saba, Susan
 Salvatore, Joann
 Saunier, Jane H.
 Say No To Clutter, LLC
 Schaffhausen, Eric P.
 & Bernadette
 Schuler, Joseph F.
 Schulz, Stephanie
 Sell, James H.
 Semper Fi Sound
 Sesame Place Inc
 Sfirri, Mark S.
 Shady, Marcia L.
 Shakely, Joseph M.
 Shangy's
 Shead, Kevin
 Sheinoff, Mitchell
 Shields, Catharine L.
 Short, Edith
 Silver, Eileen
 Simkins, Amy
 Singer, Susan J.
 Skalicky, Robert J.
 Skiffington, Thomas E.
 Smith, James J.
 Smith, Peter J.
 Smithson, Mary
 Smoln, Carol
 Stallone, Patricia
 Stangel, Michael J.
 Stockburger Service Center, LLC
 Stoloski, Mary Kay
 Storms, Elizabeth A.
 Sutton, Martin
 Tastefully Simple
 Teitelman, Gary
 The Green Parrot
 Restaurant Pub
 The Newtown
 Chocolate Shoppe
 The Prudential Foundation
 Matching Gifts
 The Summer Kitchen
 The Temperance House
 Timby, Tracy A.
 TJ Smith's Restaurant & Bar
 Tomlinson for State Senate
 Transamerica Financial
 Advisors, Inc.
 Tre Fratelli
 Tsai, Betty L.
 Turner, Nancy J.
 Tyler, Michael E.
 Tyler, Robert O.
 Tyler-Noble, Carol
 UBS Financial Services, Inc.
 United Way of Bucks County
 Uninvest National Bank
 and Trust Co.
 Vassalluzzo, Jules E.
 Vecchia Osteria
 Ventresca Ltd.
 Verizon Foundation
 Video Gold Productions, Inc.
 Videomac Inc
 Viva LaBean Espresso
 Bar Catering
 Volponi-Scott, Jean Ann
 Waldman, Scott A.
 Warren, Arleen
 Washington Scott, Robin
 Watkins, Gloria
 Watsko, Paul
 Watson, Stephen B.
 Weinstein, Marlene
 Weisser, Barbara E.
 West Buller, Amber B.
 Whartenby, Robert W.
 Wheeler, James F.
 Wiegand, Jr., Vernon I.E.
 Wiemken, Constance E.
 Wilder, Kenneth M.
 Wilson Stridick, Janice
 Wittig, Cathleen A.
 Woods Services
 Wray, Suzanne D.
 Wurtzel, Donna J.
 Yoder, John
 Young, Cheryl
 Young, Patricia Y.
 Zapor, Walter
 Zavacky, Nancy
 Zebra Striped Whale
 Zielinski, Barbara C.
 Zipin, Marjorie E.

Friends Circle \$1-\$99

Acosta, Arthur
 Adamson, Marita C.
 Albright, Gary A.
 Alexanderson, John T.
 Anderson, Leon
 Angus, Samuel D.
 Anonymous

Aon Foundation
 Arden Theatre Co.
 Armour, Raymond
 Arnold, Lois B.
 Art Real
 Ashmen, Barry
 Ashton, Elizabeth S.
 Athletic Shoe Shop
 Atkinson, Ellen E.
 Auerbach, Kathryn
 Bacco Bistro
 Baker, Karla
 Baldwin, Amanda E.
 Bannon, Denise M.
 Barris, Cynthia
 Beatty, Barbara
 Becker, Lori-Anne
 Beckschi, Peter
 Becky's Deli
 Better World Books
 Biester, Edward G.
 Bintliff, Bruce & Lynn M.
 Black Horse Tavern
 Blaskey, Mark
 Blizzard, Brenda A.
 Blough, Debra S.
 Bonaccorso, Christine
 Booraem V, Hendrik
 Boyd, Karen L.
 Brahinsky, David M.
 Branigan, Cynthia
 Breuninger, Pamala J.
 Bryan, Todd R.
 Bucks County Conference
 & Visitors Bureau
 Bunkin, Mitchell
 Byer, Jack W.
 Cafe Allesio
 Callahan, Mary J.
 Camer, Mary M.
 Camut, Leeann P.
 Carey, Kathleen A.
 Carroll, George A.
 Carson, Leslie
 Carter Van Dyke
 Associates Inc.
 Chambers Restaurant
 Chelius, Joseph A.
 Chen, Kay W.
 Chreiman, Helen D.
 Christopher, Robert J.
 Ciccimaro, Catherine
 Cipriano, Matthew J.
 Cleary, Jamaica
 Cookish, Christine A.
 Cornell, Doreen E.
 Costanzo, John F.
 Cotton, Lisa
 Cullen, Laura
 Cupitt, Donna R.
 Cuthbertson, Diane R.
 Dahlke, Richard M.

Dallas, Sean A.
 Deacon, Barbara
 Debonaventura, Patricia L.
 Delvecchio, Gloria C.
 Deon, Grace M.
 Depalma, Mary C.
 Derby, Susanne M.
 Diamond Settlement Services
 Dibala, Emily
 Didio, Johanna
 Difiori, Michael
 Dinneen, Mary D.
 Diseroad, Marie A.
 Dobren, Geoffrey
 Dolan, Jean CS
 Douris, Soteria
 Driscoll, Peggy
 Ducati, Joseph
 Dunkin Donuts - Richboro
 Dunkin Donuts - Yardley
 Dunn, Colleen
 Dziamba, Michael J.
 Easy Pieces
 Edwards, Merriam
 Enderlin, Regina
 Engleman, Michael L.
 Esris, Elizabeth L.
 Faith, Catherine J.
 Falk, Katherine
 Ferleger, Doris
 Fiorentino, Concetta
 Fisher, Douglas B.
 Fitzpatrick, Michael G.
 Fleming, Beverly
 Flint, Monica B.
 Fluharty, Nancy J.
 Frankowski, Margaret
 Fritz, Jacqueline M.
 Frumkin, Rose R.
 Genco, Elisabeth
 Geoghan, Debra E.
 George, Alice M.
 Gibbons, Judith A.
 Gidjunis, Pauline S.
 Gieda, Pearl N.
 Gilmore, Lois
 Ginty, Marty M.
 Goldman, Thomas F.
 Goldstein, Frank A.
 Goldstein, Linda
 Goodrich, Patricia J.
 Gosweiler, William L.
 Got Junk
 Grant, Larry
 Great Harvest Bread Co.
 Griga, Evelyn
 Grossi, Joanne
 Groth, Patricia
 Grotto Restaurant
 Hagedorn-Nordenholt,
 Christine A.
 Halbert, Steven C.

Hall, Gloria
 Harkins, Susan
 Harris, Carole A.
 Harris, Vivienne
 Harrison, Barbara R.
 Heater, Gertrude M.
 Helgesen, John K.
 Hemmig, William
 Hibbs, Judith A.
 Hill, Mary R.
 Hilton, Michael J.
 Hiser, Nicholas J.
 Holloway, Laura E.
 Hoover, Jacqueline C.
 Howard, Racquel
 Hunt, Loren
 Hymans, Ellen H.
 Iacobucci, Bruce C.
 Indian Valley Arts Foundation
 Ionata, Kathryn E.
 Ivins, Jr, Arthur C.
 Jacobson, Violeta D.
 Jarrett, Jasmia
 Joy, Kevin
 Kaner, Barbara
 Kara Raudenbush
 Photography
 Karschner, Heather N.
 Keene, Darius
 Keeny, Dennis C. & Martina
 Keller, Christina J.
 Kelly, Eileen
 Kennedy Davidson, Kathleen
 Kepler, Marianne R.
 King, Neal
 Kinslow, Francis J.
 Klein, M.J.
 Klicka, Mary Ann K.
 Koerber, Kenneth A.
 Konefsky, Jane
 Korson, Samuel J.
 Kulick, Elizabeth
 Kumar, Suriender & Lavinia
 La Salle, Patricia M.
 Laiter, Joyce
 Landes, Russell M.
 Landolfi, Loretta A.
 Lauer, Grace
 Lebenkoff, Laura
 Lee, Lynn Ju
 Lehman, Joseph D.
 Leimkuhler, Mary F.
 Leong, Elinor A.
 Leopold, Carol M.
 Levin, Lynn
 Levison, Judith A.
 Linaugh-Nean, Maureen
 Lion, Wendy A.
 Lowe's
 Lubchansky, Meryl L.
 MacMillan, Nancy L.
 Maddox, Victoria

Macglin, William D.
 Mahoney, Ann
 Mallouk, Thomas H.
 Manchester, Daniel
 Mann, Charles E.
 Manny Brown's Bar & Grill
 Marcavage, Melissa A.
 Matthews, Margaret K.
 Maure, Jeanne S.
 May, Laura M.
 Mayer, Roberta A.
 Mayfair Jewelers
 McArtin, Dorothy L.
 McCabe, John A.
 McCloskey, Donna
 Memsaic
 Mertwoy, Helen E.
 Metcalf, Matthew R.
 Middlebrook, John F.
 Middletown Senior
 Citizens Association
 Mignogna, Catherine
 Miller, Frederick E.
 Miller, Lloyd
 Miller, Virginia
 Mills, Mary A.
 Minnich, Donna
 Miscewitz, Christine V.
 Mohler Pigott, Jane
 Montes, Gloria-Kelly
 Moore, Patricia S.
 Moravian Pottery
 & Tile Works
 Morris, Marilee M.
 Morrissey, Daniel
 Mulholland, Kathleen V.
 Murray, Kimberly
 Nasta, Damian D.
 Neffle, Jill A.
 Newtown Bicycle Shop
 Newtown Camera
 Newtown Theatre
 Norris, Judith W.
 Norvaisas, Camille L.
 O'Connell, Patricia A.
 O'Donnell, Evelyn M.
 Oliano, John
 O'Neill, Stephen J.
 Orlando, Fran S.
 Ostrowski, Marzenna H.
 Oughton, Carol L.
 Paraczky, Kim
 Parker, Christine R.
 Parker, Ricky S.
 Patterson, Margaret
 Peck, Joanne
 Philadelphia 76ers
 Basketball Club
 Pickering, George
 PIERRO, Janet
 Pierson, Patrick
 Piotrowicz, Julie C.
 Pizzola, Mary

Platts, Karen I.
Pollock, Sara
Purscell, Phyllis L.
Rackin, Ethel
Raimondo, Paula
Ransom, Jane Y.
Ratini, Meagan M.
Reichenback, Susan
Reis, James R.
Rhodes, Janice S.
Rice, Priscilla
Ringel, Harry B.
Rizzo, Melinda E.
Roche, Matt
Rockower, Ilene
Rodel, Laura Y.
Roth, Kelly A.
Rowland, Amy
Rowlands, Virginia L.
Rubino, Frank J.
Rueth, Olga
Ryan, Sue
Sands, Richard
Sawka, Donna
Sawyer IV, Vincent E.
Schardinger, Deborah B.
Schneider, Marie R.

Schnell, Carol
Schuster, Michele
Scott, Nancy
Seidel, Stephan W.
Sette, Elizabeth M.
Shavel, Lynette
Shelly, Bruce
Siciliano, Erin M.
Sikora, Lorraine R.
Silverman Shain, Debra M.
Simolike, John G.
Simons, Frank C.
Sivel, Doris
Slaweski, Lynne E.
Slivka, Marilyn
Smith, Jennie A.
Socoloski, Lynn M.
Soltis, Linda
Spevak, Arlene J.
Staley, Valarie
Steginsky, Wendy A.
Steigerwalt, Nancy J.
Steinberg, Virginia
Stepenosky, Lenore A.
Stockburger, Kim
Strecker, Ann M.
Streznewski, Marylou K.

Studer, Kristen L.
Styer, Mary Ann
Supper, Leroy J.
T.K. Fischer Builders &
Developers, Inc.
Tamblyn, Rosemary A.
Taylor, Derrick
Telep, Edna M.
Tentilucci, Christine A.
Tentilucci, Joseph & Patricia
The Nest - LDL Designs
The Pro Shop of Newtown
The Puzzle Castle
Toland, Judith A.
Torongo, Marge
Totaro, Andrea
Traub, Douglas R.
Turner-Brady, Jeanne M.
Turturici, Tina M.
VanHart, Damian T.
Vardado, Michael
Vardaro, Michael
Vassalotti, Rosanne D.
Victor Gallery, Inc.
Victoria, Maureen F.
Vitale, Sarah
Vogenberg Family LTD
Partnerships

Wall, Cleveland J.
Walsh, Daria A.
Wells Fargo Educational
Matching Gift Program
Wenyon, John
Wertz, Anne M.
White, James
Whitehead, John W.
Wilkinson, Matthew C.
Wilson, Nancy N.
Winters, JoEllen
Wolfe, Sandra J.
Wood, James A.
Worthington, Steven
Wunder, William W.
Young, Joan M.

Tyler Legacy Society

Planned Gifts

Anonymous
Joseph DiGirolamo, Jr.
Frank A. Eckert '73*
Norman C. Ely

Gene W. Ficks
Gloria J. Field '02
David R. Johnson
Richard D. Jones

John* and Paige Long
Ray and Mary Beth Perisho
John and Patricia Poprik
Nancy J. Steigerwalt '05

Dr. Carol A. Weideman
Elizabeth V. Winpenny*

*deceased

Event Sponsors

Tyler Tasting Party

Presenting Sponsor
The First National Bank and
Trust Company of Newtown
BVT Designs
Comcast Cable
Crystal Springs Water
CulinArt, Inc.
Gasper Landscape Design &
Construction
Gemini Linens
Lawrence Lexus
Newtown Floral
Newtown Rental Center
Video Gold Productions, Inc.

Golf Classic

Tournament Benefactor
Joseph Jingoli & Son, Inc.
Aetna
Begley, Carlin & Mandio, LLP
CarSource Service Center
Charon Planning
Comcast Cable
Kathe & Pete Dominick
Independence Blue Cross
Joseph A. Fluehr III Funeral
Home Inc.
kcba Architects
Keystone Companies Group,
Inc.
McCafferty Auto Group

Ohio Casualty
Paist & Noe Insurance
SCHRADERGROUP
architecture LLC
Spiezle Architectural Group,
Inc.
Watkins Architect

Women's Scholarship

Tea
Jimmies Cupcakes
J Scones
Harbour Textile Rental Service,
Inc.

Donor Bill of Rights

Philanthropy is based on voluntary action for the common good. It is a tradition of giving and sharing that is primary to the quality of life. To ensure that philanthropy merits the respect and trust of the general public, and that donors and prospective donors can have full confidence in the nonprofit organizations and causes they are asked to support, we declare that all donors have these rights:

- I. To be informed of the organization's mission, of the way the organization intends to use donated resources, and of its capacity to use donations effectively for their intended purposes.
- II. To be informed of the identity of those serving on the organization's governing board, and to expect the board to exercise prudent judgment in its stewardship responsibilities.
- III. To have access to the organization's most recent financial statements.
- IV. To be assured their gifts will be used for the purposes for which they were given.
- V. To receive appropriate acknowledgement and recognition.
- VI. To be assured that information about their donation is handled with respect and with confidentiality to the extent provided by law.
- VII. To expect that all relationships with individuals representing organizations of interest to the donor will be professional in nature.
- VIII. To be informed whether those seeking donations are volunteers, employees of the organization or hired solicitors.
- IX. To have the opportunity for their names to be deleted from mailing lists that an organization may intend to share.
- X. To feel free to ask questions when making a donation and to receive prompt, truthful and forthright answers.

The Donor Bill of Rights was created by the American Association of Fund Raising Counsel (AAFRC), Association for Healthcare Philanthropy (AHP), the Association of Fundraising Professionals (AFP), and the Council for Advancement and Support of Education (CASE).

Support for Veterans and their Families

Kevin Zlock, founder and managing partner of Zlock & Snyder, P.C., donated \$100,000 to BCCC to establish the *Kevin Zlock Veterans Family Endowment*. The fund's proceeds will provide tuition assistance and other benefits to veterans of U.S. armed forces and their families who are enrolled in credit or noncredit programs at Bucks. "After coming back from war, veterans need to reintegrate themselves in our society, and an education will give them an opportunity to do just that," said Zlock. "We owe it to veterans to support them not only when they are fighting overseas, but also when they return as well." With a grandfather who served in World War I, and a father who was in the Navy during World War II, supporting veterans and their families is very important to Zlock. "It's my sincere hope that this donation will help veterans and their families achieve an education and prosper," he added.



Sima and Kevin Zlock (left-right) of Zlock & Snyder, P.C., presented a \$100,000 gift to BCCC President Dr. James J. Links. The contribution established the Kevin Zlock Veterans Family Endowment to help vets returning to college.